

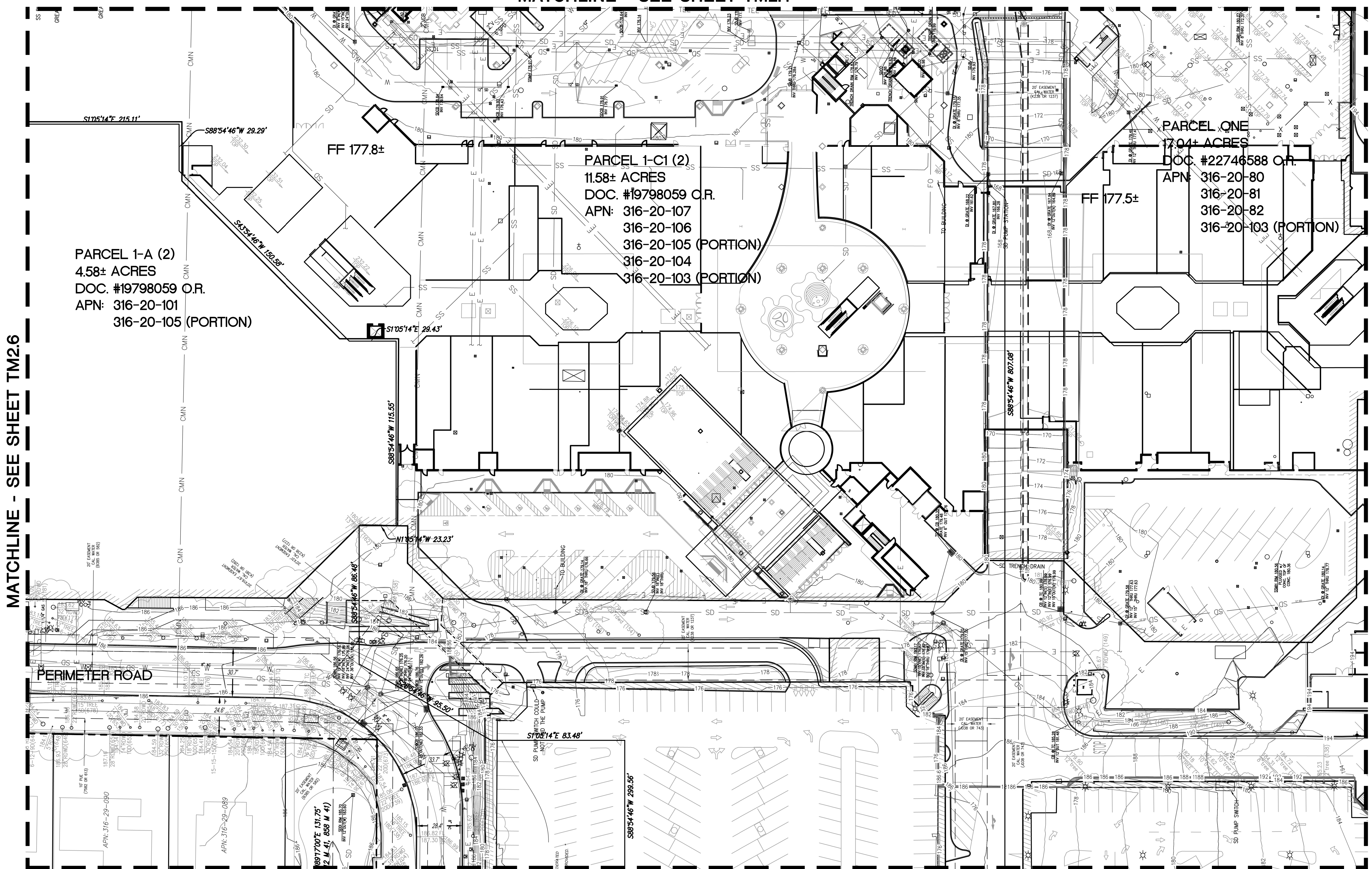
MATCHLINE - SEE SHEET TM2.4

LEGEND

--- PROPERTY LINE
 - - - ADJACENT PROPERTY LINE
 - - - STREET CENTERLINE
 - - - EASEMENTS

NOTES:

- ONLY FEE PARCELS ARE SHOWN ON THIS PLAN, ALL LEASE LINES ARE TO BE REMOVED AS PART OF THIS TENTATIVE MAP AND RECORDED ON THE SUBSEQUENT FINAL MAP.
- ANY EASEMENTS ON ADJACENT PARCELS TO BE MODIFIED WILL BE MODIFIED UNDER A SEPARATE INSTRUMENT AND WILL REQUIRE FULL APPROVAL OF ADJACENT PROPERTY AND EASEMENT OWNER.
- CONTOURS SHOWN ARE AT ONE FOOT INTERVALS.



MATCHLINE - SEE SHEET TM2.6

MATCHLINE - SEE SHEET TM2.8

MATCHLINE - SEE SHEET TM2.9

SANDIS CIVIL ENGINEERS SURVEYORS PLANNERS
 1700 S. Winchester Blvd, Suite 200, Campbell, CA 95008 | P. 408.636.0900 | F. 408.636.0999 | www.sandis.net
 SILICON VALLEY TRI-VALLEY CENTRAL VALLEY SACRAMENTO EAST BAY/SF

DATE: 09-15-2018 DATE: SEPTEMBER 15, 2018
 SCALE: 1"=30'
 DRAWN BY: SP
 APPROVED BY: ND
 DRAWING NO.: 215028
 KELLY S. JOHNSON
 P.L.S. NO. 9126, EXPIRES 9-30-18



No.	REVISION/ISSUE	DATE	BY
REV-0	SB-35 DEVELOPMENT APPLICATION	03/27/2018	ND
REV-1	SB-35 APPLICATION REVISIONS	08/06/2018	ND
REV-2	SB-35 APPLICATION CONFORM SET	09/15/2018	ND

TOPOGRAPHIC SURVEY

TENTATIVE SUBDIVISION MAP
 VALLCO TOWN CENTER
 CUPERTINO CALIFORNIA

SHEET
TM2.7
 OF 73 SHEETS
 Copyright © 2018 by Sandis