

NOTE
STREET SECTIONS ARE ILLUSTRATIVE. REFER TO CIVIL, LANDSCAPE, AND LIGHTING DRAWINGS FOR SITE INFORMATION.

Client
VALCO PROPERTY OWNER LLC
200 EL CAMINO REAL, SUITE 410
PALO ALTO, CA 94306
TEL: 650.344.1500

Architecture
KOHN PEDERSEN FOX ASSOCIATES PC
11 WEST 42ND STREET
NEW YORK, NY 10036
TEL: 212.877.6500

Architecture
KOHN PEDERSEN FOX ASSOCIATES PC
2 EMBARCADERO CENTER
SAN FRANCISCO, CA 94111
TEL: 415.844.5491

Landscape Architecture
OLIN
1617 JOHN F. KENNEDY BOULEVARD, SUITE 1900
PHILADELPHIA, PA 19103
TEL: 215.440.0030

Civil
SANDIS
1703 S. WINCHESTER BOULEVARD, SUITE 200
CAMPBELL, CA 95113
TEL: 408.638.0900

Lighting Design
ONE LUX STUDIO
158 WEST 29TH STREET, 10TH FLOOR
NEW YORK, NY 10001
TEL: 212.201.5790

Structure
DCI ENGINEERS
135 MAIN STREET, SUITE 1800
SAN FRANCISCO, CA 94109
TEL: 415.781.1505

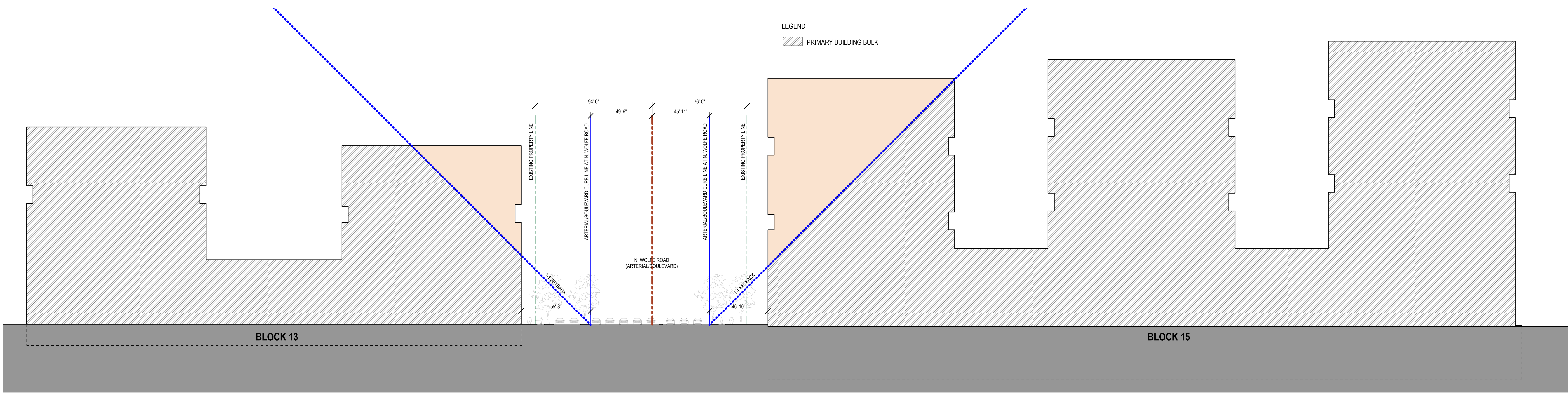
MEP
MEYERS+ ENGINEERS
98 BATTERY STREET, SUITE 500
SAN FRANCISCO, CA 94111
TEL: 415.432.8101

Geotechnical
DANGHAN
1 ALMADEN BOULEVARD, SUITE 500
SAN JOSE, CA 95113
TEL: 408.263.3000

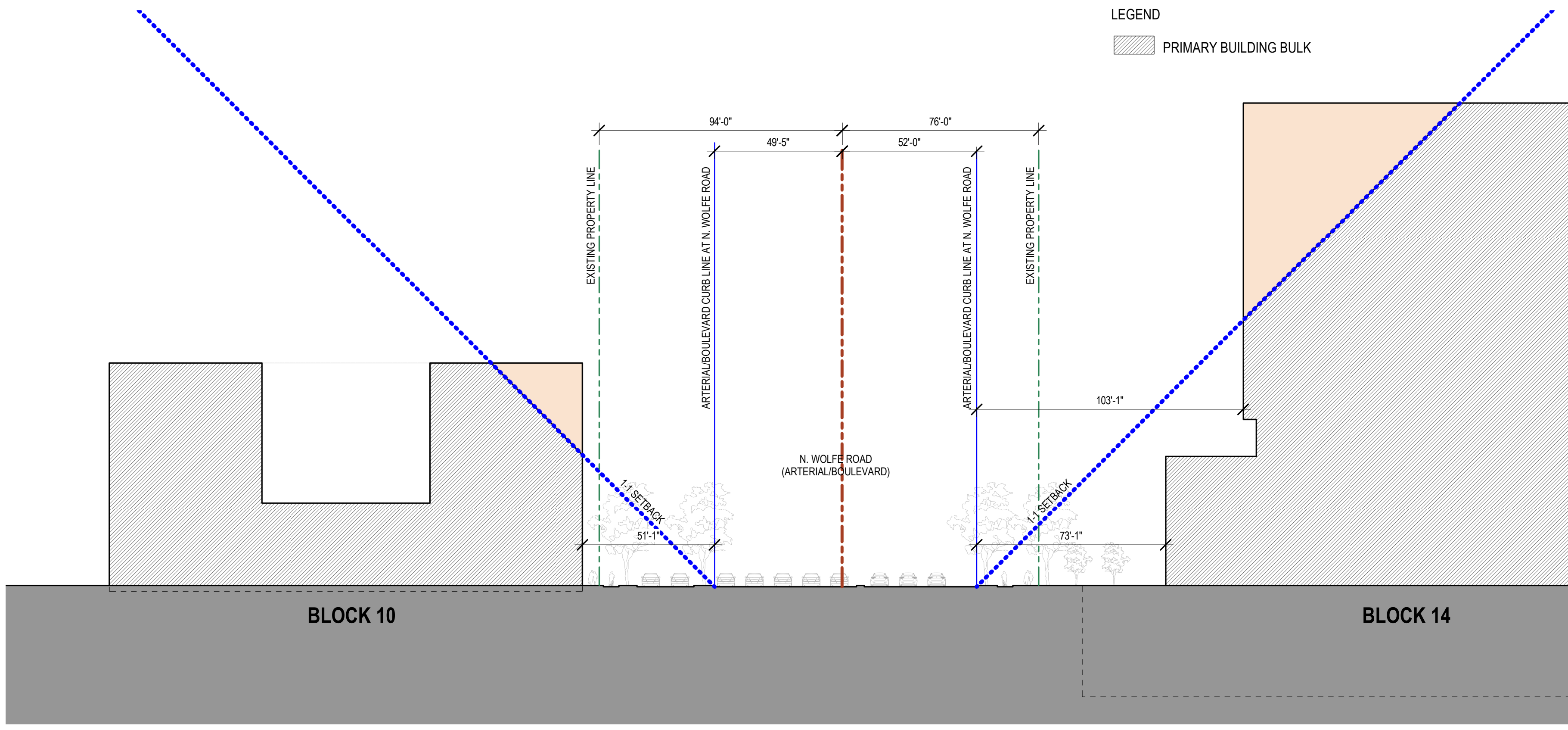
Traffic
KIMLEY-HORN
10 SOUTH ALMADEN BOULEVARD, SUITE 1250
SAN JOSE, CA 95113
TEL: 989.800.4130

Parking Engineering
WATRY DESIGN, INC.
2099 GATEWAY PLACE, SUITE 550
SAN JOSE, CA 95110
TEL: 833.917.7275

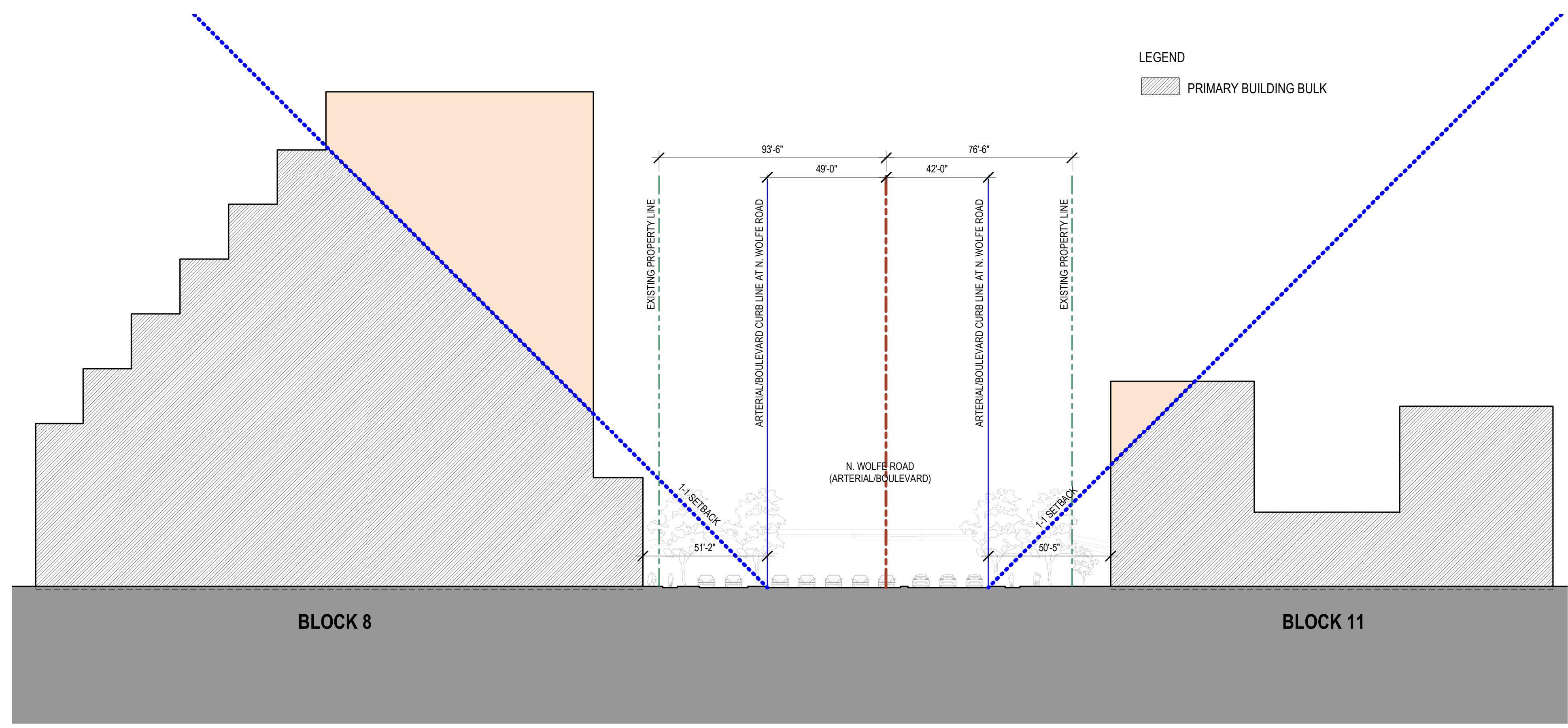
Logistics
ARUP
400 MISSION STREET, SUITE 700
SAN FRANCISCO, CA 94105
TEL: 415.957.9445



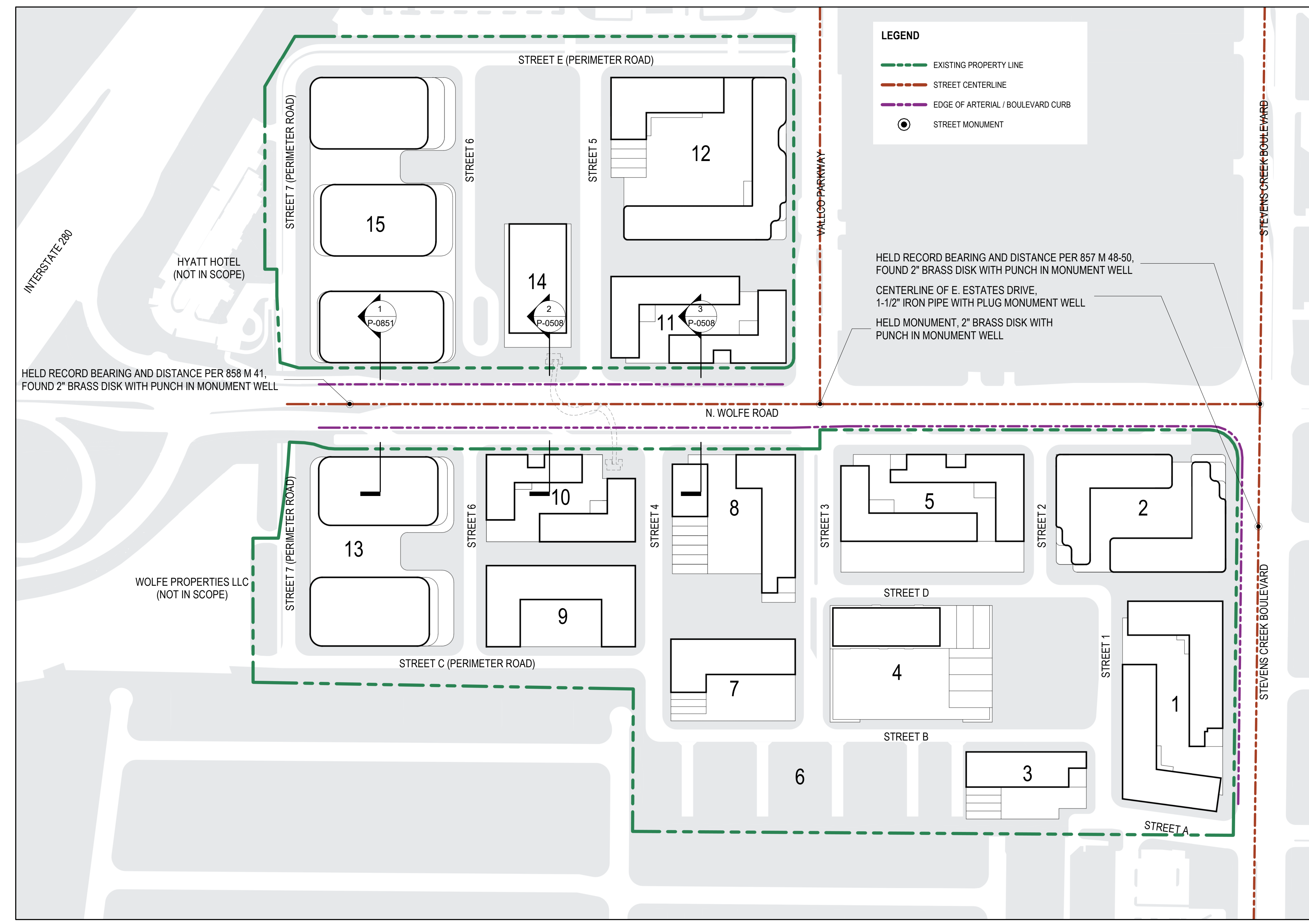
1 SETBACK DIAGRAM - BLOCKS 13 & 15
SCALE: 1/32" = 1'-0"



2 SETBACK DIAGRAM - BLOCKS 10 & 14
SCALE: 1/32" = 1'-0"



3 SETBACK DIAGRAM - BLOCKS 8 & 11
SCALE: 1/32" = 1'-0"



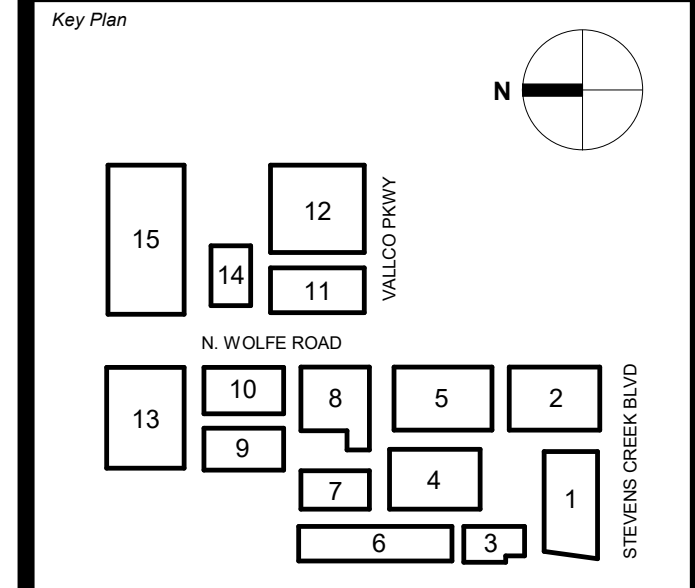
4 PLAN DIAGRAM
SCALE: 1" = 160'

SB 35 MODIFICATION APPLICATION

Revision

Rev.	Description	Date
REV-4	SB-35 MODIFICATION APPLICATION	12/04/2023
REV-3	SB-35 MODIFICATION APPLICATION	09/23/2022
REV-2	SB-35 APPLICATION - CONFORM SET	09/15/2018
REV-1	SB-35 APPLICATION - REVISION	07/31/2018
REV-0	SB-35 DEVELOPMENT APPLICATION	03/27/2018

Site & Signature



NOT FOR CONSTRUCTION

Issue Date: 03/27/2018 Project No: 3462
Scale: N.T.S.
Drawing Title: SITE DIAGRAMS - SETBACK COMPLIANCE - BLOCKS 8, 10, 11, 13, 14 & 15

P-0508