

VALLCO TOWN CENTER

LEGEND

- PROPERTY LINE
- CENTERLINE
- AIR RIGHTS, PEDESTRIAN AND VEHICULAR EASEMENTS
- PEDESTRIAN AND VEHICULAR, WGRESS/EGRESS EASEMENTS
- VEHICULAR TUNNEL EASEMENT
- SANITARY SEWER EASEMENT
- FOOTING EASEMENT

NOTES

- 1) EXISTING OFFSITE EASEMENTS ARE TO REMAIN AS THEY CURRENTLY EXIST.

OWNER - VALLCO PROPERTY OWNER LLC
965 PAGE MILL ROAD, PALO ALTO, CA 94304
T. 650-344-1920

ARCHITECTURE - RAFAEL VINOLY ARCHITECTS
50 VANDAM STREET, NEW YORK, NY 10013
T. 212-924-5000

ARCHITECTURE - RAFAEL VINOLY ARCHITECTS
1033 N. WOLFE ROAD, CUPERTINO CA 95014
T. 408-627-7000

LANDSCAPE ARCHITECTURE - OLIN PARTNERSHIP LTD.
192 S. INDEPENDENCE HALL, W. SHITE 1123, PHILADELPHIA, PA 19106
T. 215-440-0000

CIVIL - SANDS CIVIL ENGINEERS SURVEYORS PLANNERS, INC.
1700 S. WINCHESTER BLVD, SUITE 200, CAMPBELL, CA 95008
T. 408-636-0500

TRANSPORTATION ENGINEERING - ARUP NORTH AMERICA, LTD.
560 MISSION STREET SUITE 700 SAN FRANCISCO CA 94105
T. 415-597-9445

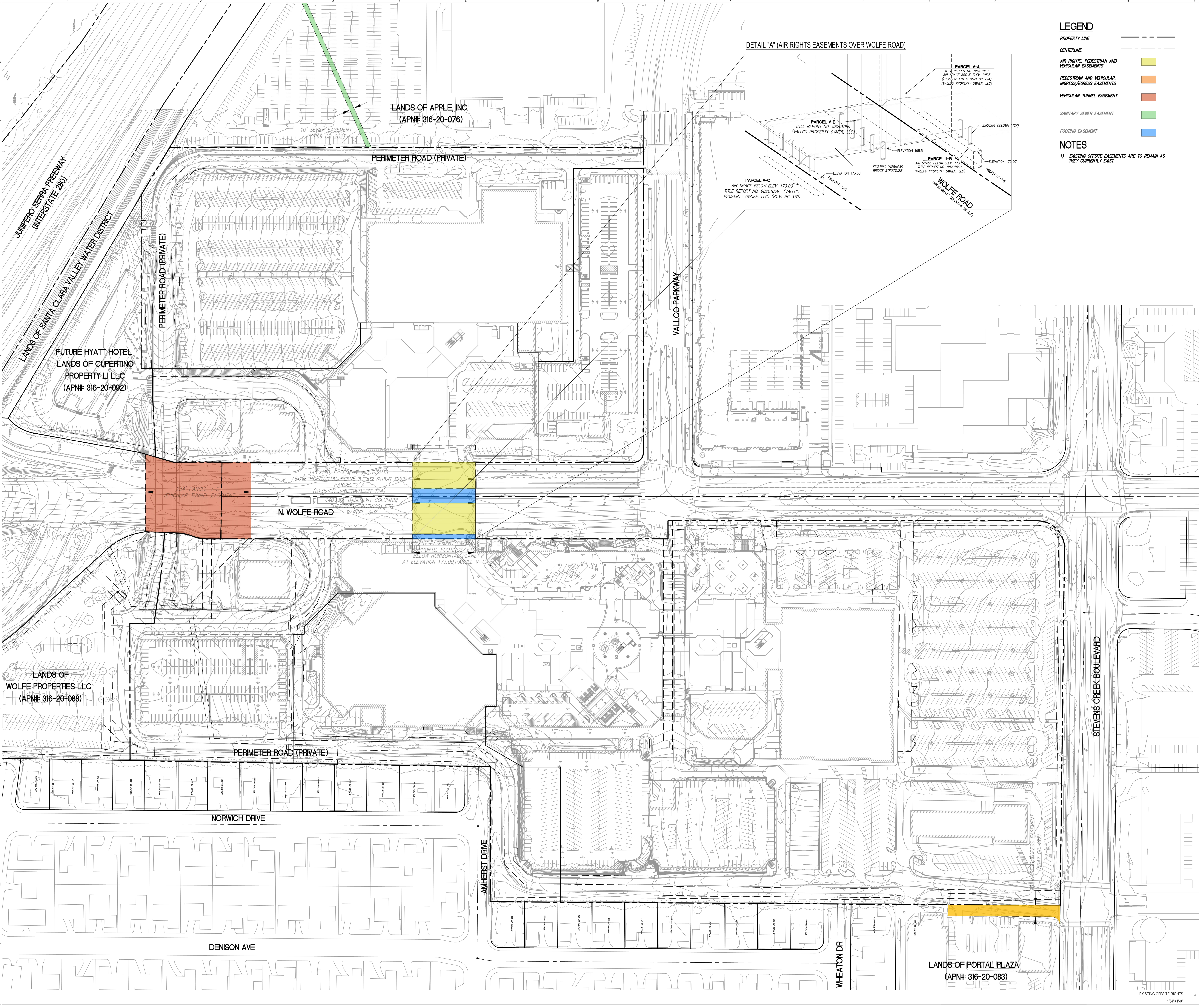
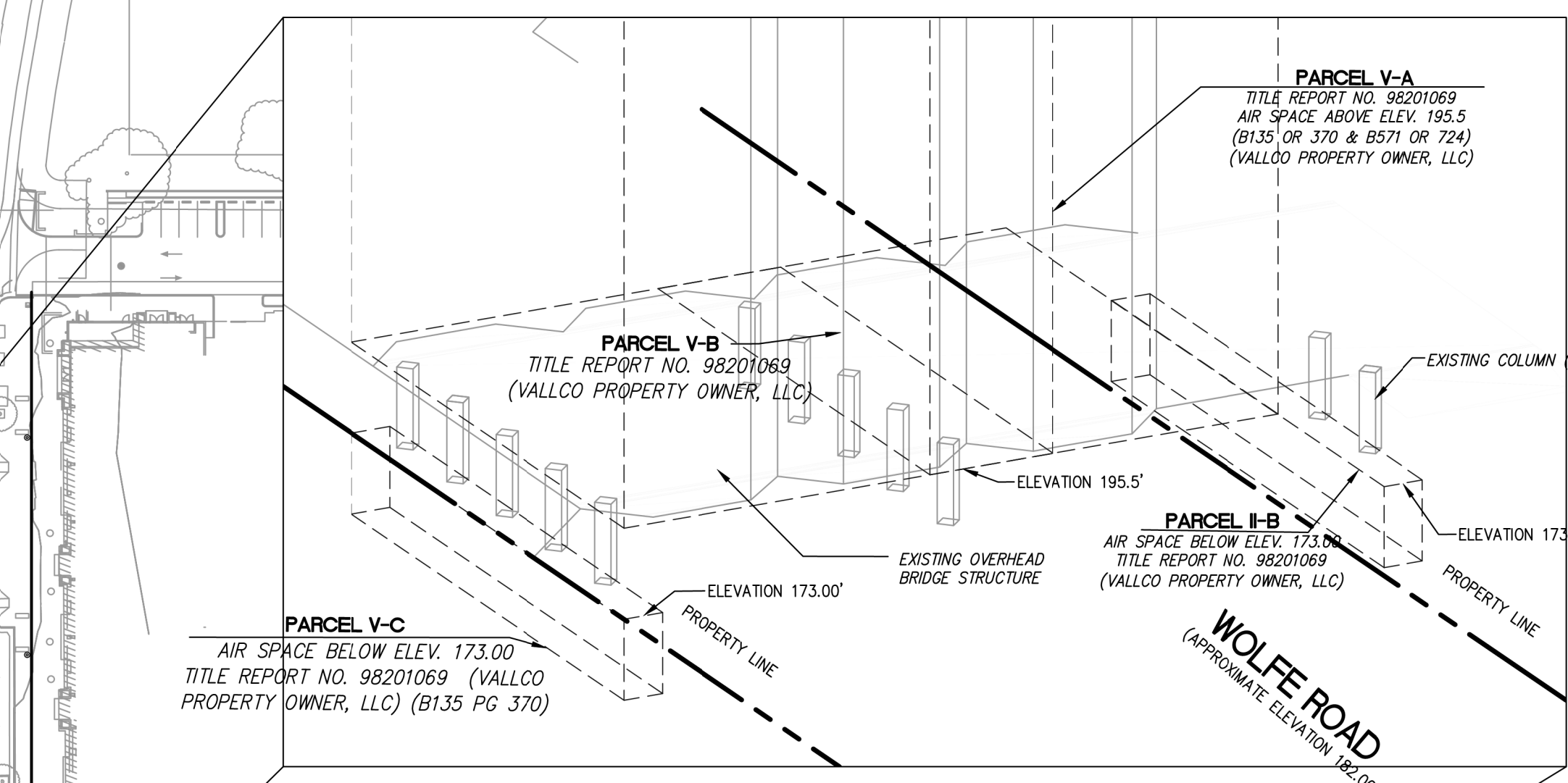
LIGHTING - ONE LUX STUDIO
158 WEST 29TH STREET, 10TH FLOOR, NEW YORK, NY 10001
T. 212-321-9790

SIGNAGE - EXIT
1817 JFK BLVD, SUITE 1665, PHILADELPHIA, PA 19103
T. 215-581-1550

PARKING ENGINEERING - WATRY DESIGN, INC.
2090 GATEWAY PLACE, SUITE 550, SAN JOSE, CA 95110
T. 408-292-7200

WASTE MANAGEMENT - CN+LITTLE INTERNATIONAL
535 NORTH BRAN BLVD, STE 710 GLENDALE, CA 92103
T. 825-441-7700

DETAIL "A" (AIR RIGHTS EASEMENTS OVER WOLFE ROAD)

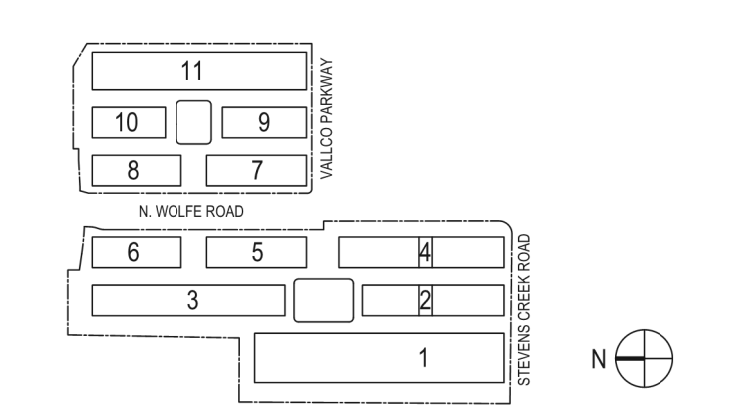


NOT FOR CONSTRUCTION

DISCLAIMER
THE ARCHITECT/ENGINEER SHALL HAVE NO RESPONSIBILITY FOR ANY LIABILITY, LOSS, COST, DAMAGE OR EXPENSE ARISING FROM OR RELATING TO ANY USE OF THIS DOCUMENT FOR ANY PURPOSE OTHER THAN ITS INTENDED PURPOSE ON THIS PROJECT. THIS DOCUMENT IS TO BE CONSIDERED IN CONJUNCTION WITH ALL RELATED DOCUMENTATION. ANY DISCREPANCIES IDENTIFIED IN THIS DOCUMENT MUST BE REPORTED IMMEDIATELY TO THE ARCHITECT BEFORE PROCEEDING. CONTRACTORS MUST VERIFY ALL DIMENSIONS PRIOR TO PROCEEDING WITH ANY WORK. ONLY FIGURED DIMENSIONS ARE TO BE USED FOR VERIFICATION.

SB-35 DEVELOPMENT APPLICATION

REV	DESCRIPTION	DATE
REV.0	SB-35 DEVELOPMENT APPLICATION	03/27/2018
REV.1	SB-35 APPLICATION REVISIONS	06/06/2018
REV.2	SB-35 APPLICATION CONFORM SET	09/15/2018



KEY PLAN AND NORTH ARROW

ARCHITECTS PROJECT NUMBER 708011

PROJECT PHASE SB-35 DEVELOPMENT APPLICATION

IF THIS DRAWING IS NOT 36"x48" IT IS A REDUCED PRINT. REFER TO GRAPHIC SCALE.



SCALE: 1/8" = 1'-0"

EXISTING OFFSITE RIGHTS

SHEET TITLE

P-0305

SHEET NUMBER 1

© 2018 RAFAEL VINOLY ARCHITECTS PCL