

**Client**  
VALCO PROPERTY OWNER LLC  
2000 EL CAMINO REAL, SUITE 410  
PALO ALTO, CA 94306  
TEL: 650.344.1500

**Architecture**  
KOHN PEDERSEN FOX ASSOCIATES PC  
11 WEST 42ND STREET  
NEW YORK, NY 10036  
TEL: 212.877.6000

**Architecture**  
KOHN PEDERSEN FOX ASSOCIATES PC  
2 EMBARCADERO CENTER  
SAN FRANCISCO, CA 94111  
TEL: 415.844.5491

**Landscape Architecture**  
OLIN  
1617 JOHN F. KENNEDY BOULEVARD, SUITE 1900  
PHILADELPHIA, PA 19103  
TEL: 215.440.0030

**Civil**  
SANDIS  
1700 S. WINCHESTER BOULEVARD, SUITE 200  
CAMPBELL, CA 95113  
TEL: 408.636.0900

**Lighting Design**  
ONE LUX STUDIO  
158 WEST 29TH STREET, 10TH FLOOR  
NEW YORK, NY 10001  
TEL: 212.201.5790

**Structure**  
DCI ENGINEERS  
135 MAIN STREET, SUITE 1800  
SAN FRANCISCO, CA 94109  
TEL: 415.781.1505

**MEP**  
MEYERS+ ENGINEERS  
98 BATTERY STREET, SUITE 500  
SAN FRANCISCO, CA 94111  
TEL: 415.432.8101

**Geotechnical**  
JANGHAN  
1 ALMADEN BOULEVARD, SUITE 500  
SAN JOSE, CA 95113  
TEL: 408.263.3000

**Traffic**  
KIMLEY-HORN  
10 SOUTH ALMADEN BOULEVARD, SUITE 1250  
SAN JOSE, CA 95113  
TEL: 969.800.4130

**Parking Engineering**  
WATRY DESIGN, INC.  
2099 GATEWAY PLACE, SUITE 550  
SAN JOSE, CA 95110  
TEL: 833.917.7275

**Logistics**  
ARUP  
850 MISSION STREET, SUITE 700  
SAN FRANCISCO, CA 94105  
TEL: 415.957.9445

## SB 35 MODIFICATION APPLICATION

Revision

REV: SB-35 MODIFICATION APPLICATION 12/04/2023

No. Description Date

Pay Plan

15 14 12 11 10 9 8 5 2 1

13 10 8 5 2 1

13 10 8 5 2 1

13 10 8 5 2 1

13 10 8 5 2 1

13 10 8 5 2 1

13 10 8 5 2 1

13 10 8 5 2 1

13 10 8 5 2 1

13 10 8 5 2 1

13 10 8 5 2 1

13 10 8 5 2 1

13 10 8 5 2 1

13 10 8 5 2 1

13 10 8 5 2 1

13 10 8 5 2 1

13 10 8 5 2 1

13 10 8 5 2 1

13 10 8 5 2 1

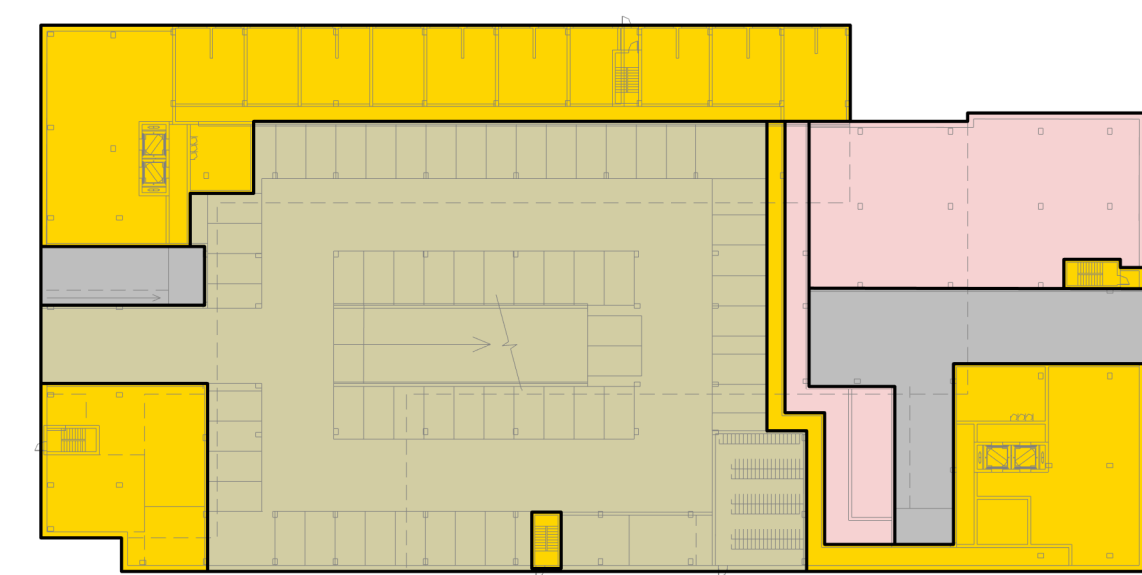
13 10 8 5 2 1

13 10 8 5 2 1

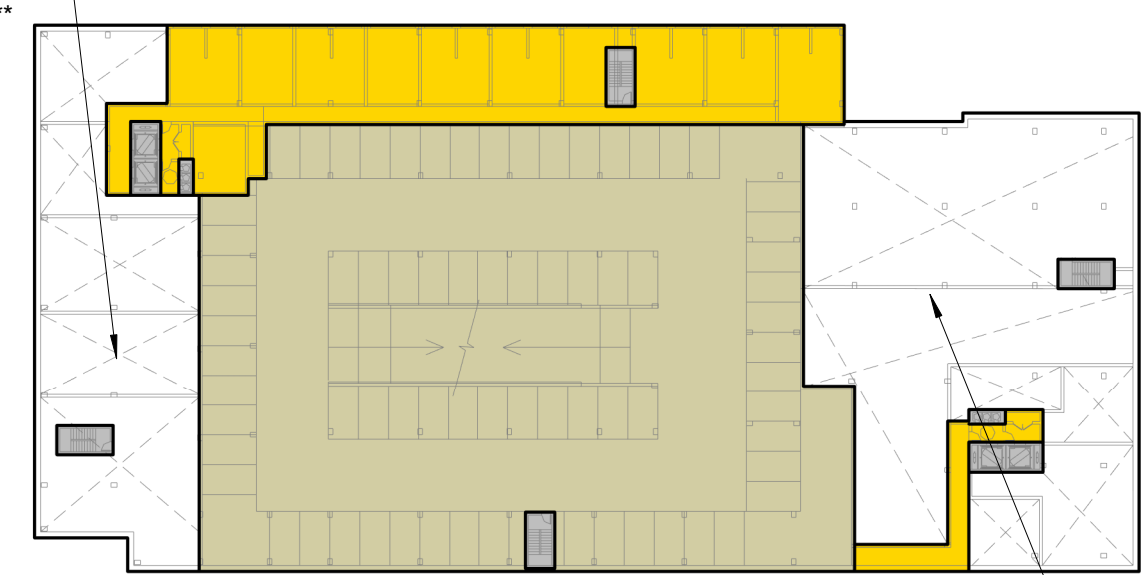
13 10 8 5 2 1

13 10 8 5 2 1

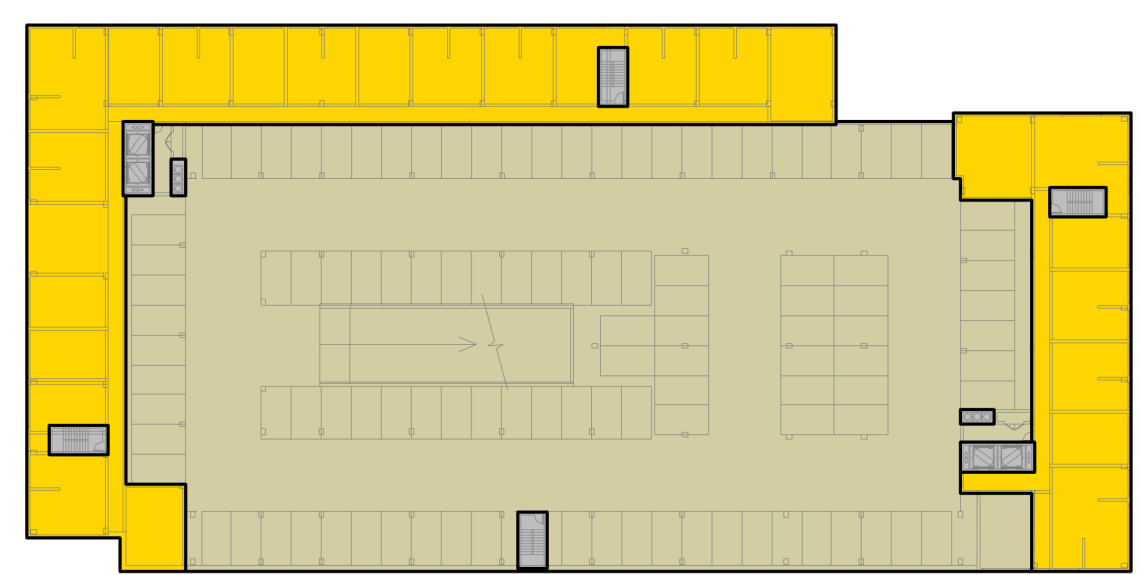
13 10 8 5 2 1



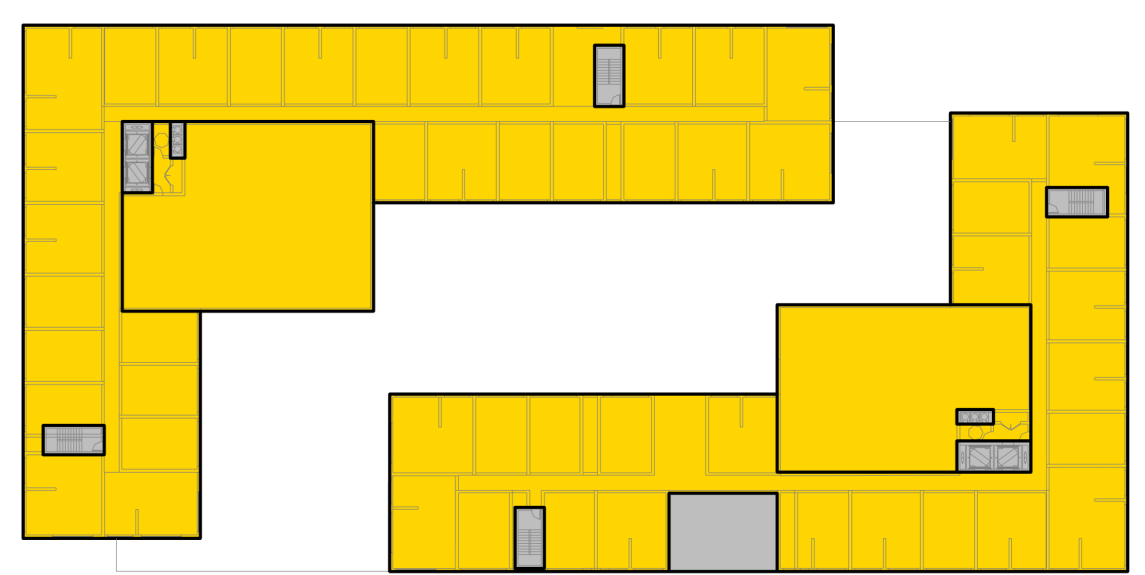
1 BLOCK 11 - LEVEL 01  
SCALE: 1/8" = 1'-0"



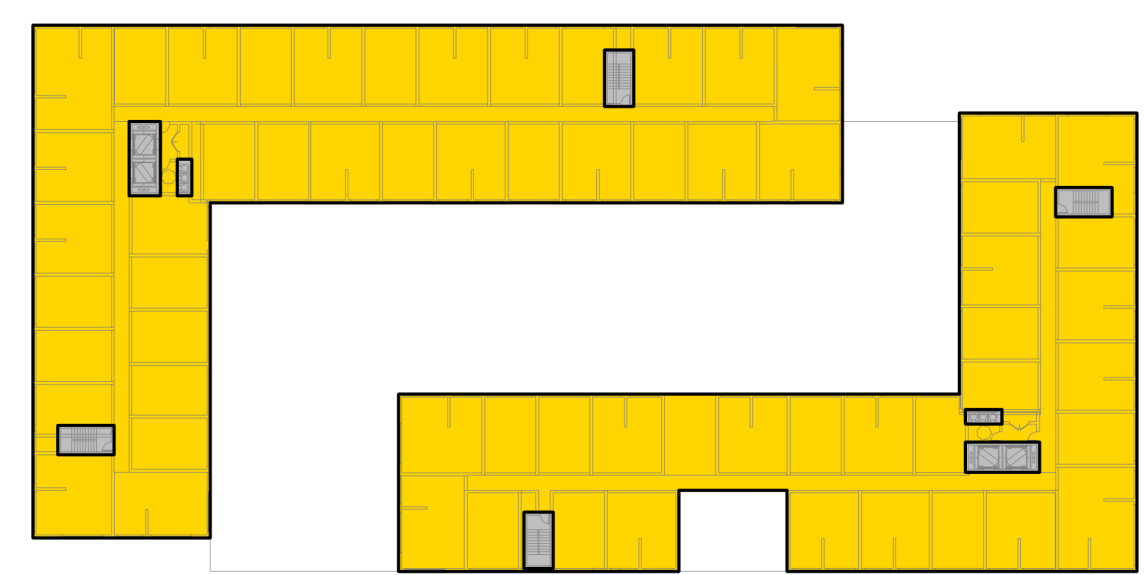
2 BLOCK 11 - LEVEL 02  
SCALE: 1/8" = 1'-0"



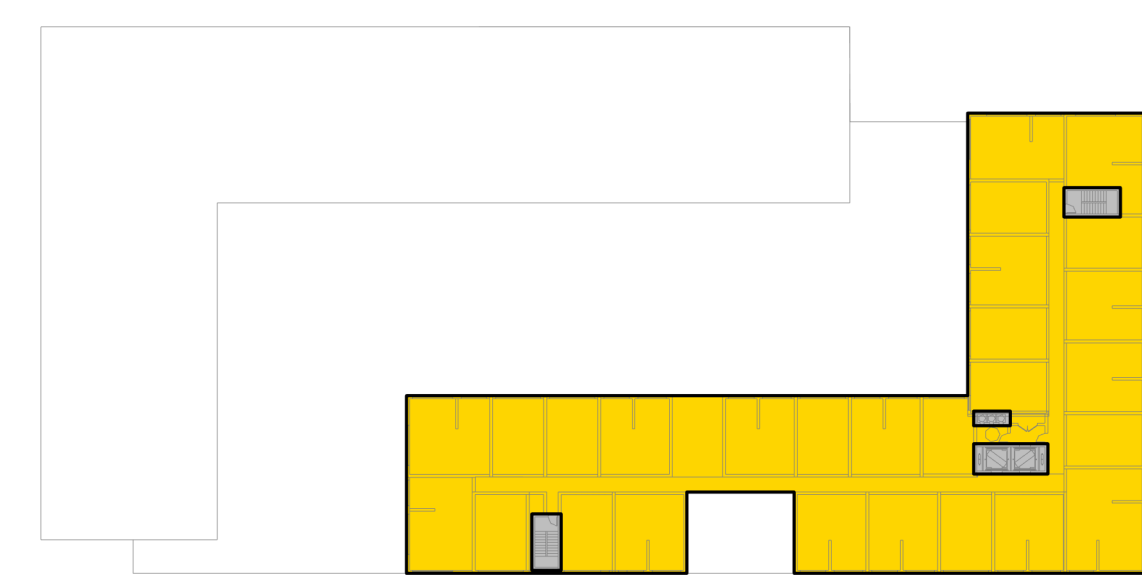
3 BLOCK 11 - LEVEL 03  
SCALE: 1/8" = 1'-0"



4 BLOCK 11 - LEVEL 04  
SCALE: 1/8" = 1'-0"



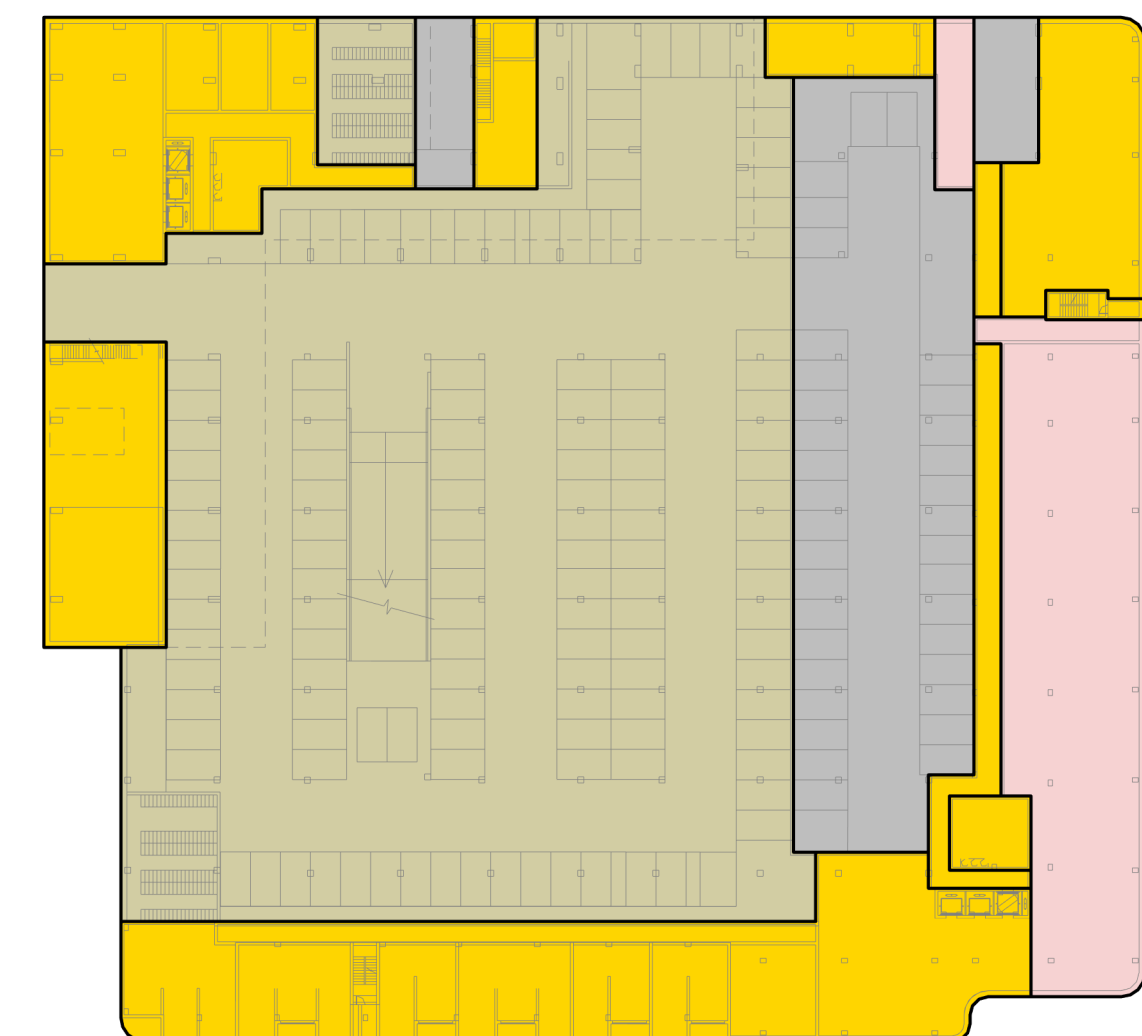
5 BLOCK 11 - LEVELS 05-07  
SCALE: 1/8" = 1'-0"



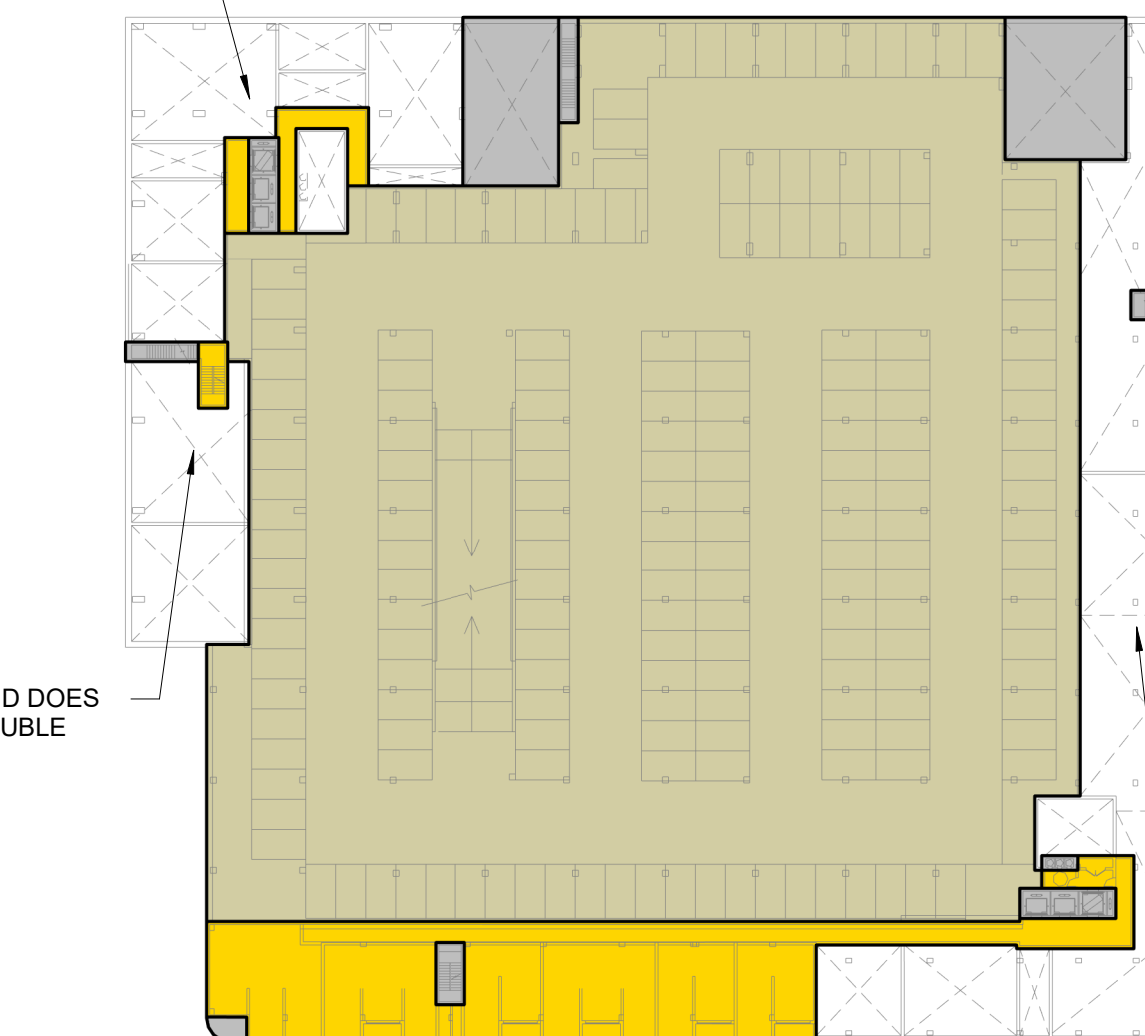
18 BLOCK 11 - LEVEL 08  
SCALE: 1/8" = 1'-0"

BLOCK 11					
TOTAL BLOCK AREA (SF)	RESIDENTIAL			NON-RESIDENTIAL	
	TOTAL RESIDENTIAL (SF)	RESIDENTIAL* (SF)	RESIDENTIAL PARKING (SF)	RETAIL (SF)	OFFICE (SF)
LEVEL 8	18,406	18,406	18,406	0	0
LEVEL 7	40,237	40,237	40,237	0	0
LEVEL 6	40,237	40,237	40,237	0	0
LEVEL 5	40,237	40,237	40,237	0	0
LEVEL 4	44,019	44,019	44,019	0	0
LEVEL 3	62,314	62,314	19,394	42,920	0
LEVEL 2	39,553	39,553	9,150	30,403	0
LEVEL 1	58,562	50,265	20,639	29,626	8,297
<b>TOTALS</b>	<b>343,565 SF</b>	<b>335,268 SF</b>	<b>232,319 SF</b>	<b>102,949 SF</b>	<b>8,297 SF</b>

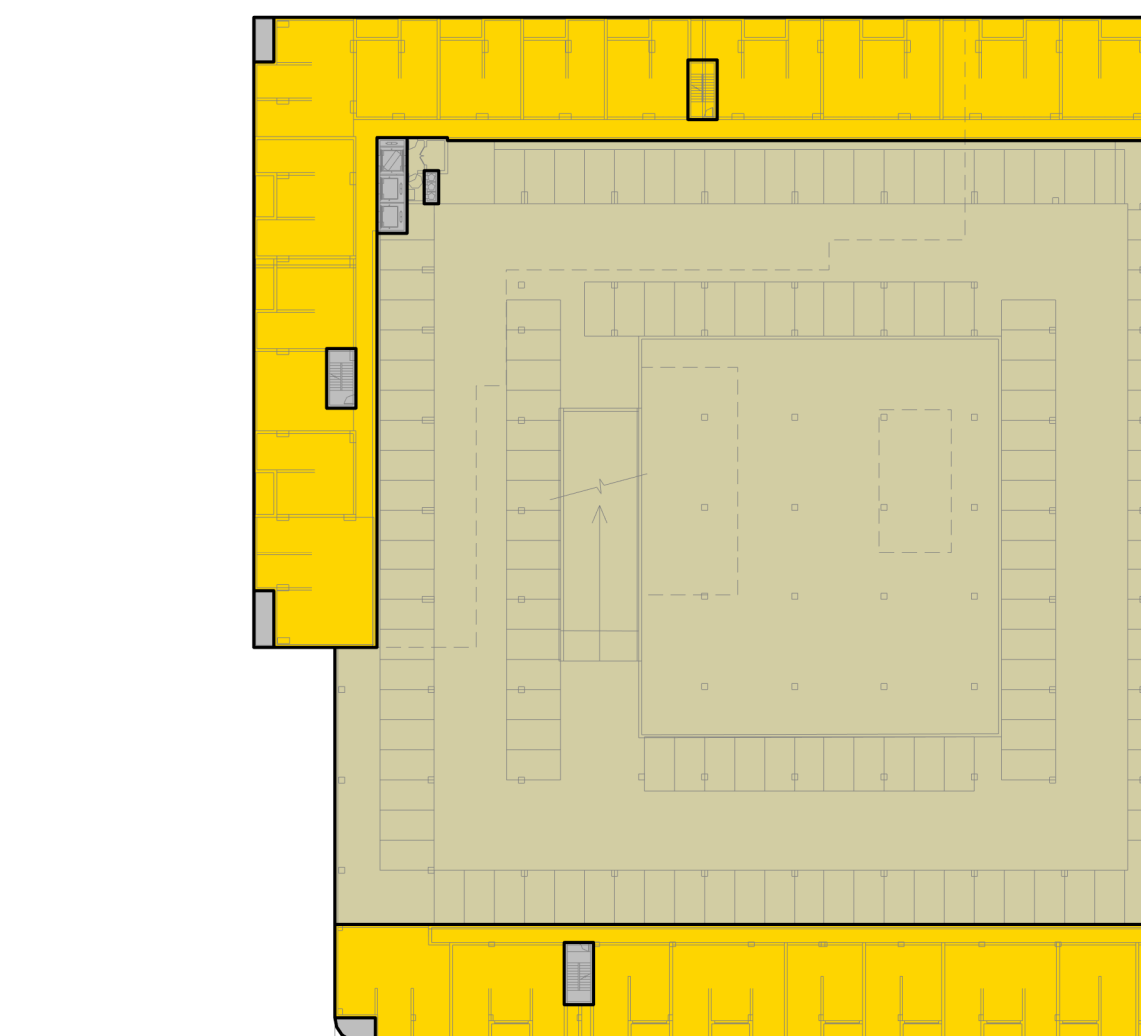
**NOTE:**  
- BASE OF STAIRWELLS, BASE OF ELEVATOR SHAFTS, SERVICES AND MECHANICAL EQUIPMENT ROOMS ARE INCLUDED IN THE FLOOR AREA.  
\* RESIDENTIAL AREA INCLUDES UNITS, CORES, CORRIDORS, LOBBIES, AMENITIES, AND MEP/SERVICES)  
\*\* PER CUPERTINO MUNICIPAL CODE 19.08.030 AREAS WITH A FLOOR-TO-CEILING HEIGHT THAT EXCEEDS TWENTY FEET IN HEIGHT AT THE FIRST FLOOR AND FIFTEEN FEET IN HEIGHT AT FLOORS 2 AND UP ARE INCLUDED IN THE AREA CALCULATION AS DOUBLE-HEIGHT.  
\*\*\* EXCLUDED AREAS SUCH AS PARKING FACILITIES OTHER THAN RESIDENTIAL GARAGES (PARKING RAMPS TO BASEMENTS, DRIVE AISLES), LOADING



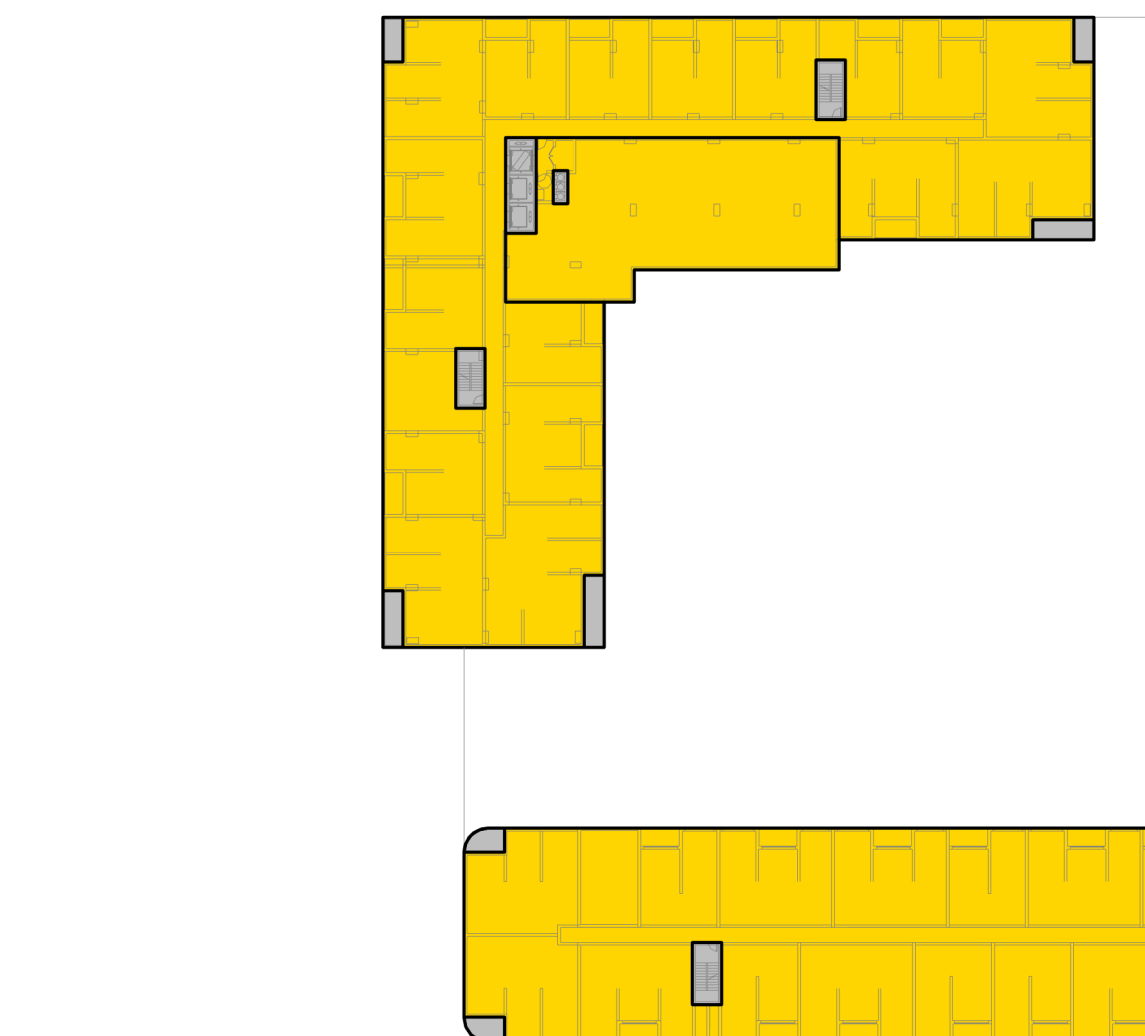
6 BLOCK 12 - LEVEL 01  
SCALE: 1/8" = 1'-0"



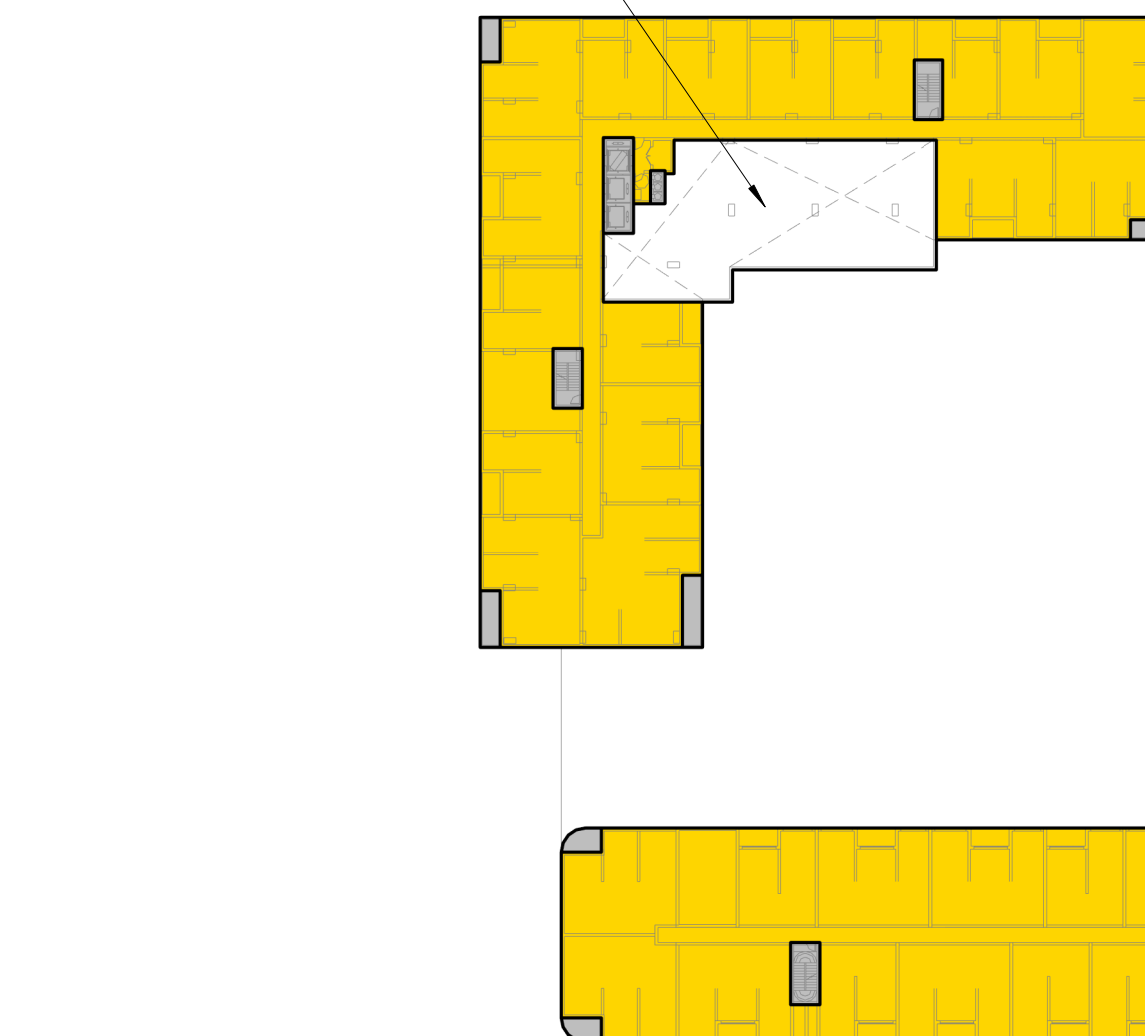
7 BLOCK 12 - LEVEL 02  
SCALE: 1/8" = 1'-0"



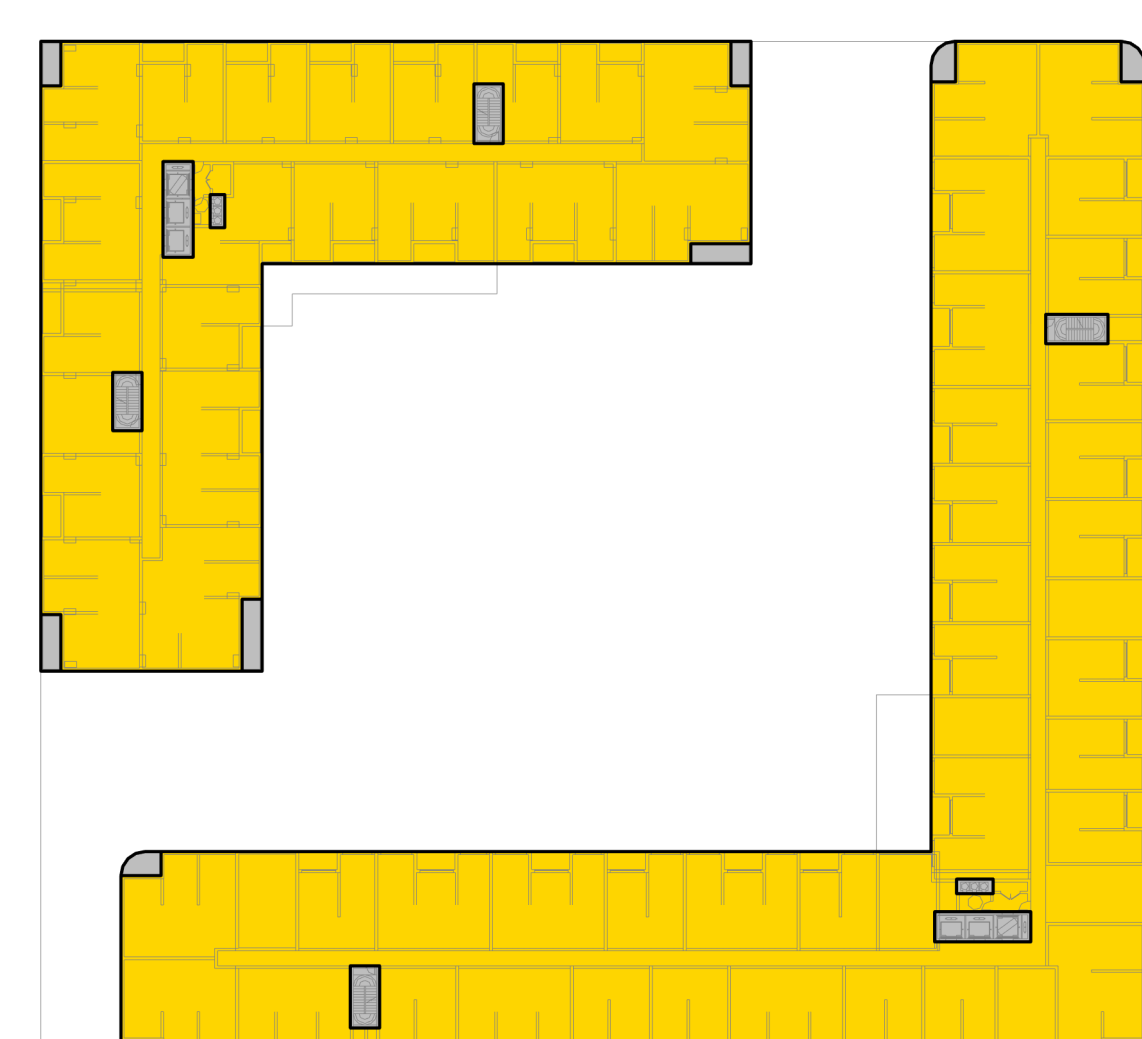
8 BLOCK 12 - LEVEL 03  
SCALE: 1/8" = 1'-0"



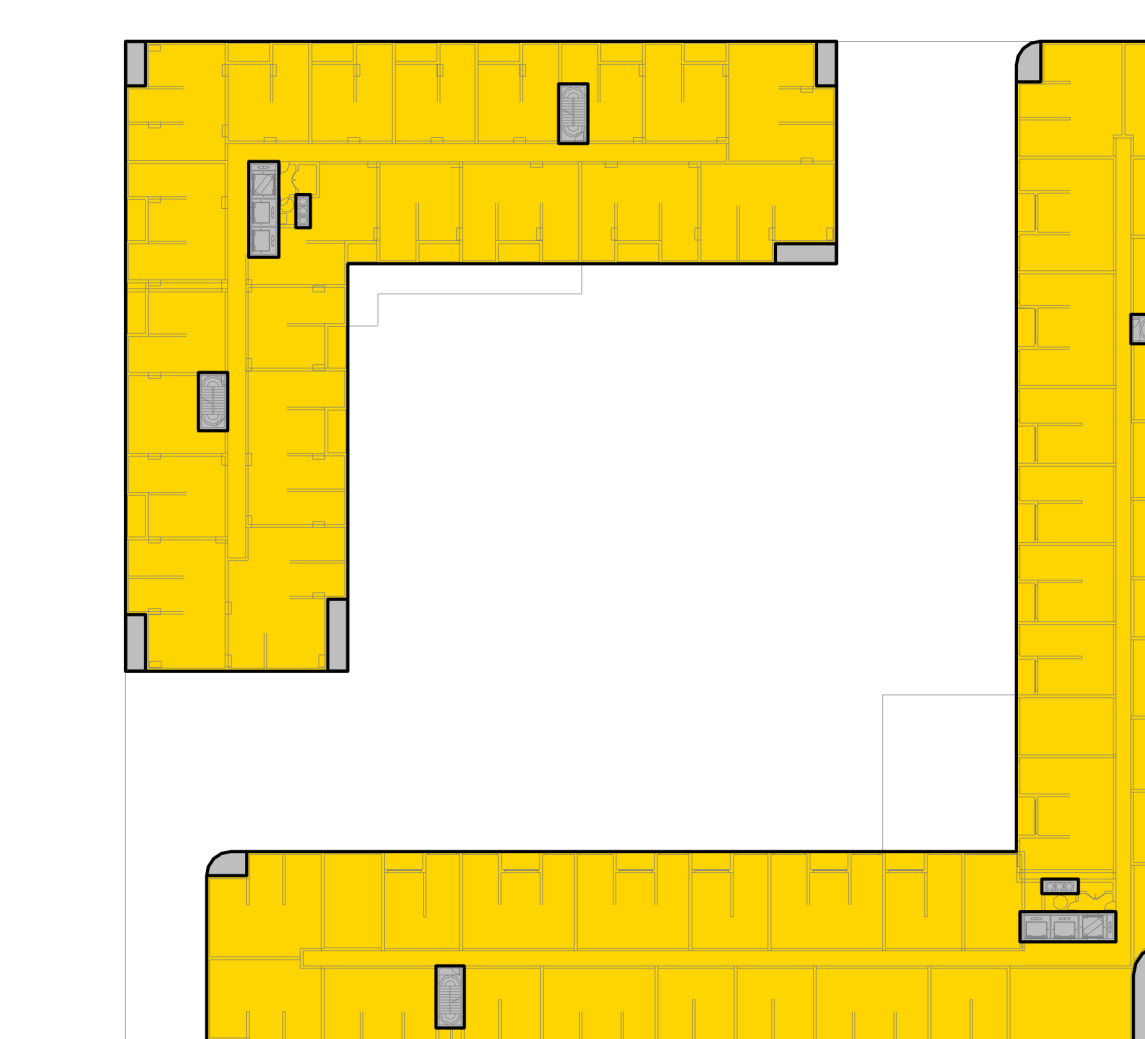
9 BLOCK 12 - LEVEL 04  
SCALE: 1/8" = 1'-0"



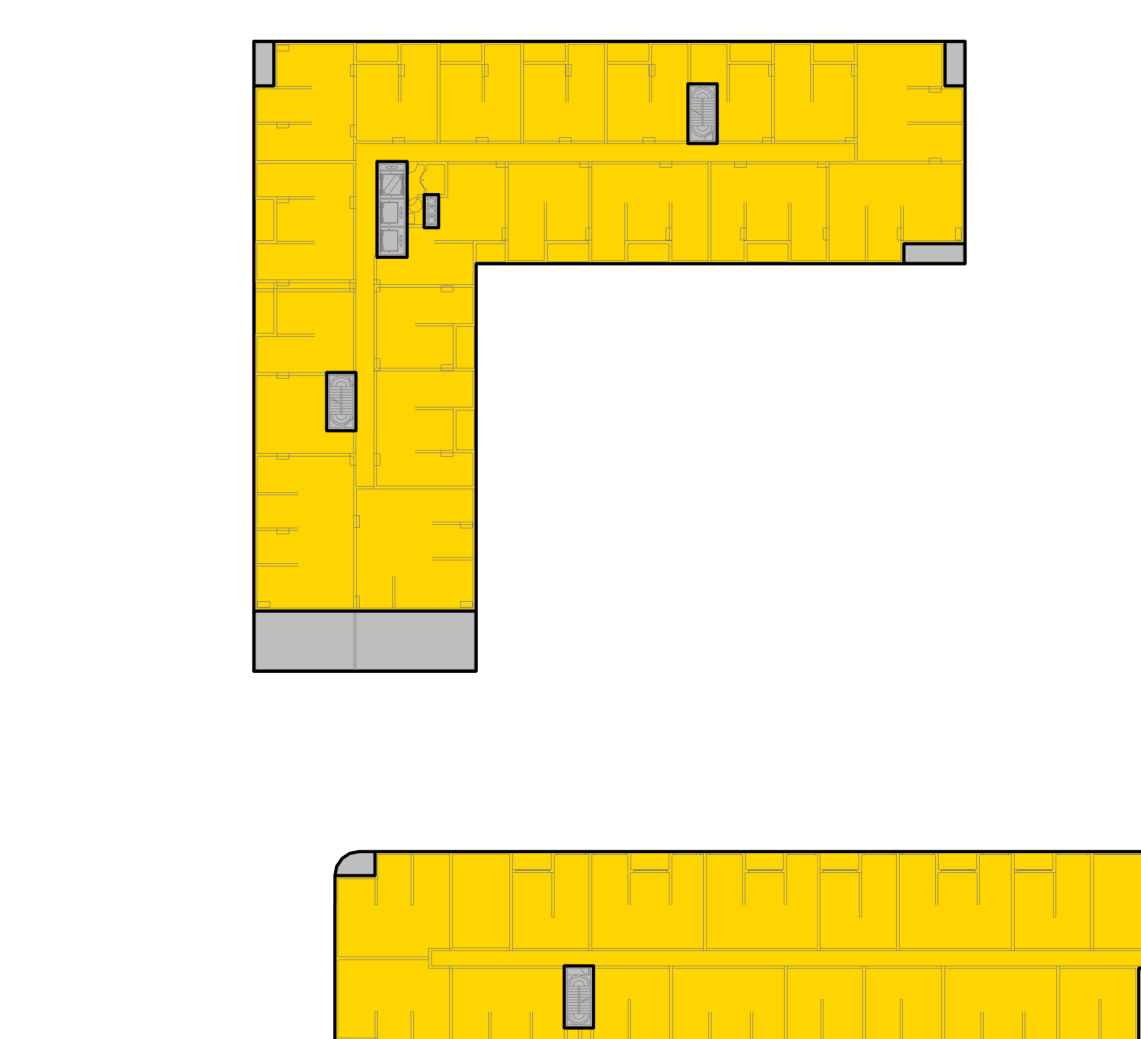
10 BLOCK 12 - LEVEL 05  
SCALE: 1/8" = 1'-0"



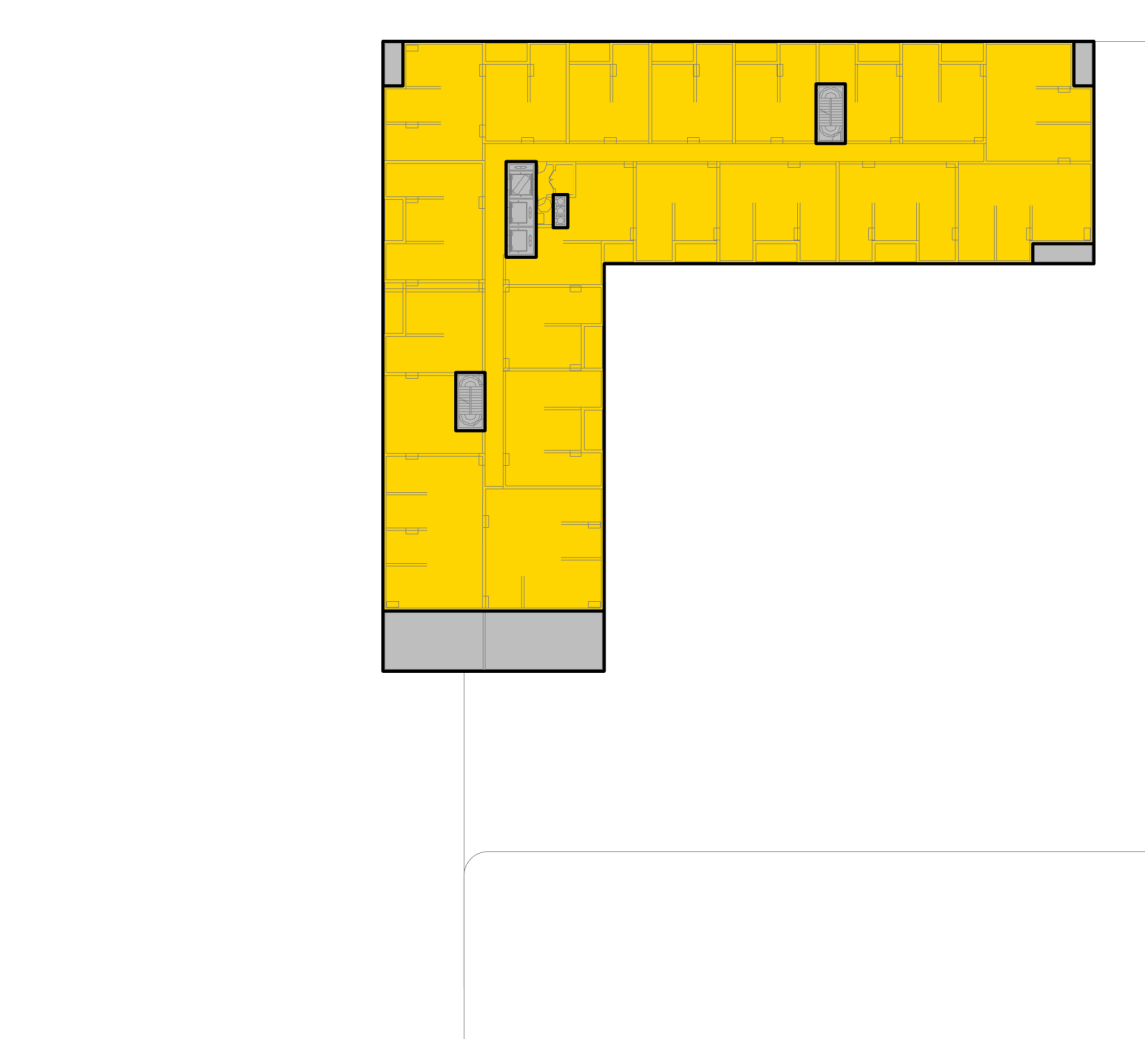
11 BLOCK 12 - LEVEL 06  
SCALE: 1/8" = 1'-0"



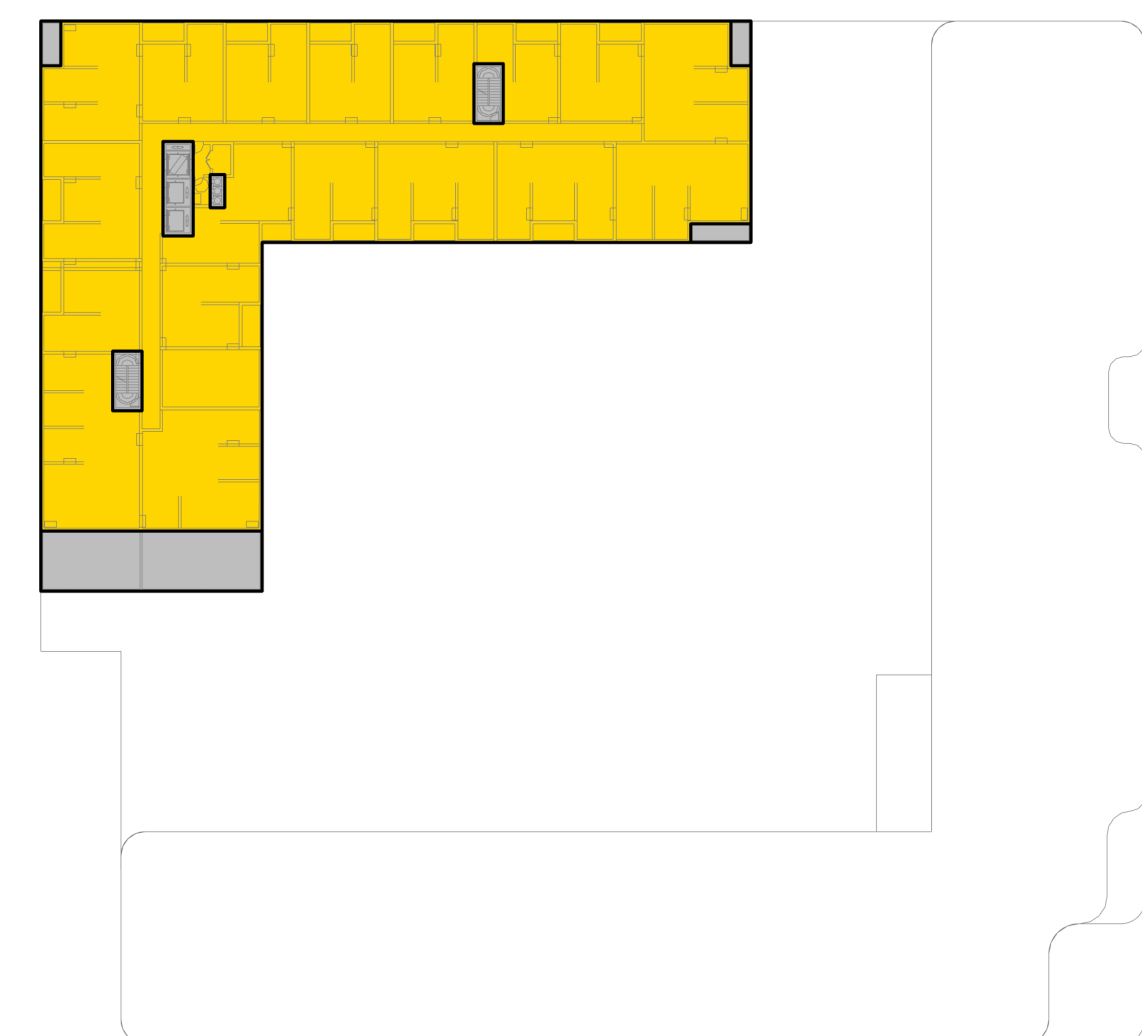
14 BLOCK 12 - LEVEL 07  
SCALE: 1/8" = 1'-0"



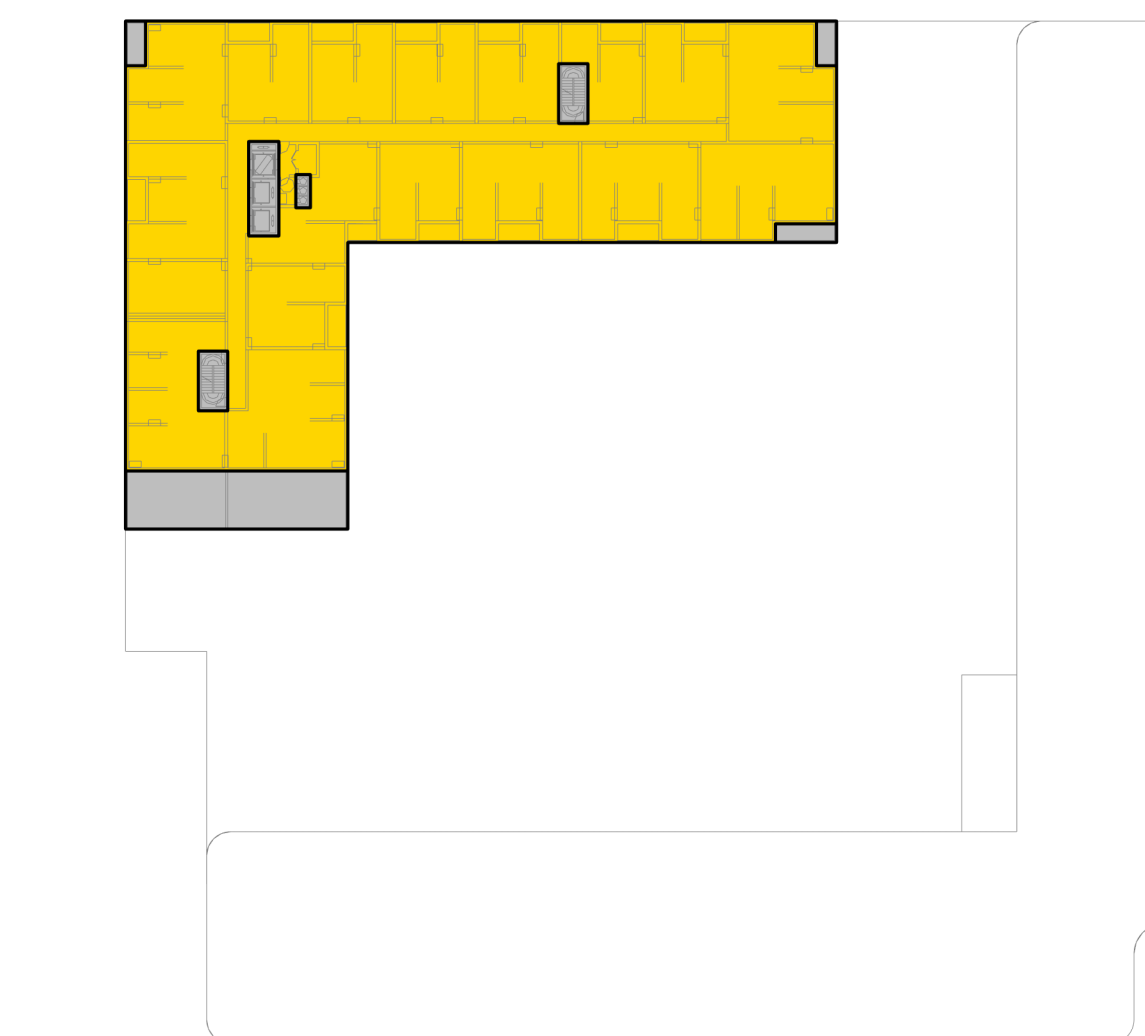
12 BLOCK 12 - LEVEL 08  
SCALE: 1/8" = 1'-0"



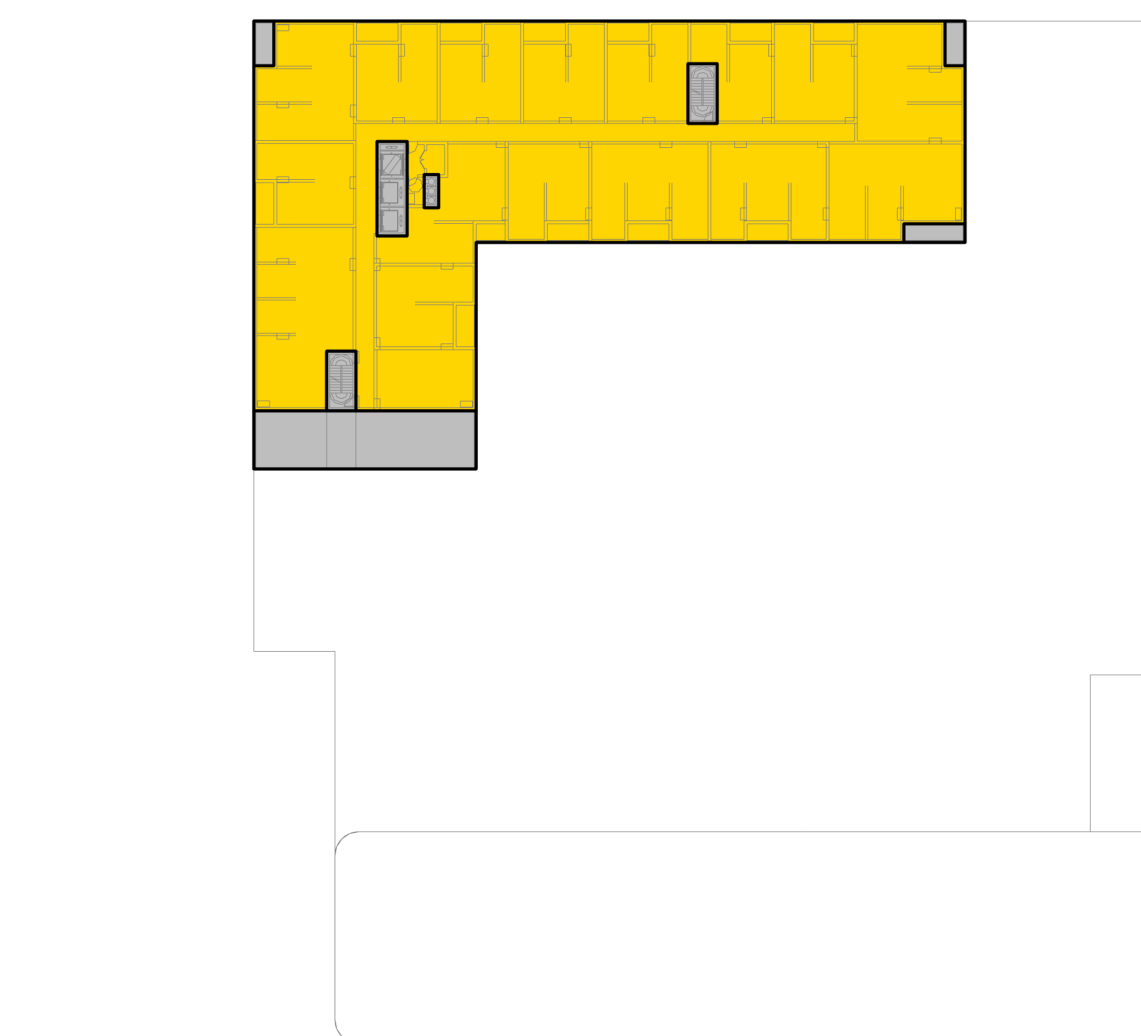
17 BLOCK 12 - LEVEL 09  
SCALE: 1/8" = 1'-0"



13 BLOCK 12 - LEVELS 10-11  
SCALE: 1/8" = 1'-0"



15 BLOCK 12 - LEVELS 12-13  
SCALE: 1/8" = 1'-0"



16 BLOCK 12 - LEVELS 14-15  
SCALE: 1/8" = 1'-0"

BLOCK 12					
TOTAL BLOCK AREA (SF)	RESIDENTIAL			NON-RESIDENTIAL	
	TOTAL RESIDENTIAL (SF)	RESIDENTIAL* (SF)	RESIDENTIAL PARKING (SF)	RETAIL (SF)	OFFICE (SF)
LEVEL 15	20,590	20,590	20,590	0	0
LEVEL 14	20,590	20,590	20,590	0	0
LEVEL 13	22,070	22,070	22,070	0	0
LEVEL 12	22,070	22,070	22,070	0	0
LEVEL 11	23,550	23,550	23,550	0	0
LEVEL 10	23,550	23,550	23,550	0	0
LEVEL 9	25,030	25,030	25,030	0	0
LEVEL 8	63,825	63,825	63,825	0	0
LEVEL 7	67,147	67,147	67,147	0	0
LEVEL 6	68,330	68,330	68,330	0	0
LEVEL 5	61,848	61,848	61,848	0	0
LEVEL 4	70,118	70,118	70,118	0	0
LEVEL 3	120,058	120,058	44,589	75,469	0
LEVEL 2	86,710	86,710	10,084	76,626	0
LEVEL 1	102,714	89,746	32,137	57,609	12,968
<b>TOTALS</b>	<b>798,200 SF</b>	<b>785,232 SF</b>	<b>575,528 SF</b>	<b>209,704 SF</b>	<b>12,968 SF</b>

**NOTE:**  
- BASE OF STAIRWELLS, BASE OF ELEVATOR SHAFTS, SERVICES AND MECHANICAL EQUIPMENT ROOMS ARE INCLUDED IN THE FLOOR AREA.  
\* RESIDENTIAL AREA INCLUDES UNITS, CORES, CORRIDORS, LOBBIES, AMENITIES, AND MEP/SERVICES)  
\*\* PER CUPERTINO MUNICIPAL CODE 19.08.030 AREAS WITH A FLOOR-TO-CEILING HEIGHT THAT EXCEEDS TWENTY FEET IN HEIGHT AT THE FIRST FLOOR AND FIFTEEN FEET IN HEIGHT AT FLOORS 2 AND UP ARE INCLUDED IN THE AREA CALCULATION AS DOUBLE-HEIGHT.  
\*\*\* EXCLUDED AREAS SUCH AS PARKING FACILITIES OTHER THAN RESIDENTIAL GARAGES (PARKING RAMPS TO BASEMENTS, DRIVE AISLES), LOADING

**LEGEND**

- RESIDENTIAL\*
- RESIDENTIAL PARKING
- RETAIL
- OFFICE
- EXCLUDED AREAS \*\*\*

NOT FOR CONSTRUCTION

Area Calculations - Per Block and Level (Block 11 & 12)

P-0106.06