

Client

VALLCO PROPERTY OWNER LLC
200 EL CAMINO REAL, SUITE 410
PALO ALTO, CA 94306
TEL: 650.344.1500

Architecture

KOHN PEDERSEN FOX ASSOCIATES PC
11 WEST 42ND STREET
NEW YORK, NY 10036
TEL: 212.877.6500

Architecture

KOHN PEDERSEN FOX ASSOCIATES PC
2 EMBARCADERO CENTER
SAN FRANCISCO, CA 94111
TEL: 415.844.5491

Landscape Architecture

OLIN
1617 JOHN F. KENNEDY BOULEVARD, SUITE 1900
PHILADELPHIA, PA 19103
TEL: 215.440.0030

Civil

SANDIS
1700 S. WINCHESTER BOULEVARD, SUITE 200
CAMPBELL, CA 95113
TEL: 408.638.0900

Lighting Design

ONE LUX STUDIO
158 WEST 29TH STREET, 10TH FLOOR
NEW YORK, NY 10001
TEL: 212.201.5790

Structure

DCI ENGINEERS
135 MAIN STREET, SUITE 1800
SAN FRANCISCO, CA 94109
TEL: 415.781.1505

MEP

MEYERS+ ENGINEERS
88 BATTERY STREET, SUITE 500
SAN FRANCISCO, CA 94111
TEL: 415.432.8101

Geotechnical

LANGRAN
1 ALMADEN BOULEVARD, SUITE 500
SAN JOSE, CA 95113
TEL: 408.263.3000

Traffic

KIMLEY-HORN
10 SOUTH ALMADEN BOULEVARD, SUITE 1250
SAN JOSE, CA 95113
TEL: 969.800.4130

Parking Engineering

WATRY DESIGN, INC.
2099 GATEWAY PLACE, SUITE 550
SAN JOSE, CA 95110
TEL: 833.917.7275

Logistics

ARUP
260 MISSION STREET, SUITE 700
SAN FRANCISCO, CA 94105
TEL: 415.857.9445

SB 35 MODIFICATION APPLICATION

Revision

REV. No. SB-35 MODIFICATION APPLICATION 12/04/2023

No. Description Date

Rev. Plan

15 14 12 11 10 9 8 7 6 5 4 3 2 1

15 14 12 11 10 9 8 7 6 5 4 3 2 1

15 14 12 11 10 9 8 7 6 5 4 3 2 1

15 14 12 11 10 9 8 7 6 5 4 3 2 1

15 14 12 11 10 9 8 7 6 5 4 3 2 1

15 14 12 11 10 9 8 7 6 5 4 3 2 1

15 14 12 11 10 9 8 7 6 5 4 3 2 1

15 14 12 11 10 9 8 7 6 5 4 3 2 1

15 14 12 11 10 9 8 7 6 5 4 3 2 1

15 14 12 11 10 9 8 7 6 5 4 3 2 1

15 14 12 11 10 9 8 7 6 5 4 3 2 1

15 14 12 11 10 9 8 7 6 5 4 3 2 1

15 14 12 11 10 9 8 7 6 5 4 3 2 1

15 14 12 11 10 9 8 7 6 5 4 3 2 1

15 14 12 11 10 9 8 7 6 5 4 3 2 1

15 14 12 11 10 9 8 7 6 5 4 3 2 1

15 14 12 11 10 9 8 7 6 5 4 3 2 1

15 14 12 11 10 9 8 7 6 5 4 3 2 1

15 14 12 11 10 9 8 7 6 5 4 3 2 1

15 14 12 11 10 9 8 7 6 5 4 3 2 1

15 14 12 11 10 9 8 7 6 5 4 3 2 1

15 14 12 11 10 9 8 7 6 5 4 3 2 1

15 14 12 11 10 9 8 7 6 5 4 3 2 1

15 14 12 11 10 9 8 7 6 5 4 3 2 1

15 14 12 11 10 9 8 7 6 5 4 3 2 1

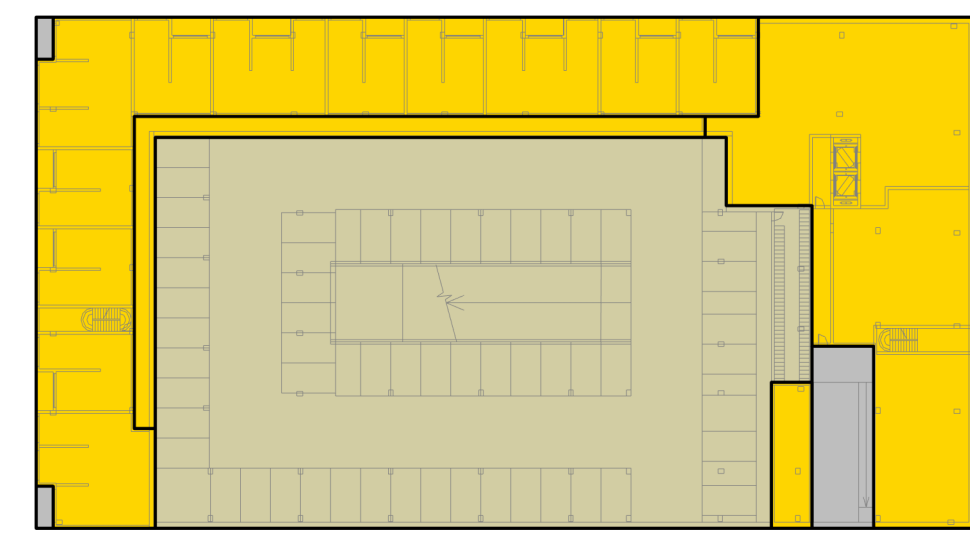
15 14 12 11 10 9 8 7 6 5 4 3 2 1

15 14 12 11 10 9 8 7 6 5 4 3 2 1

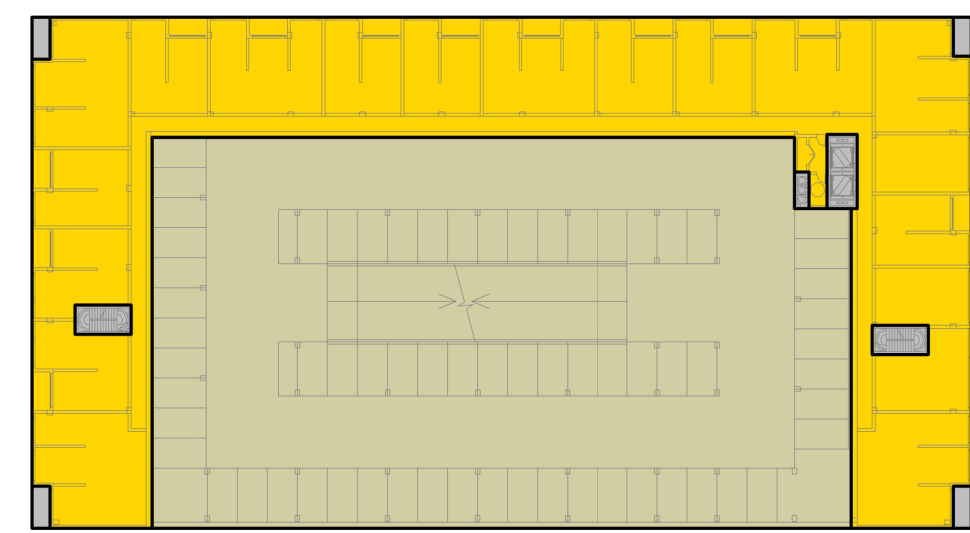
15 14 12 11 10 9 8 7 6 5 4 3 2 1

15 14 12 11 10 9 8 7 6 5 4 3 2 1

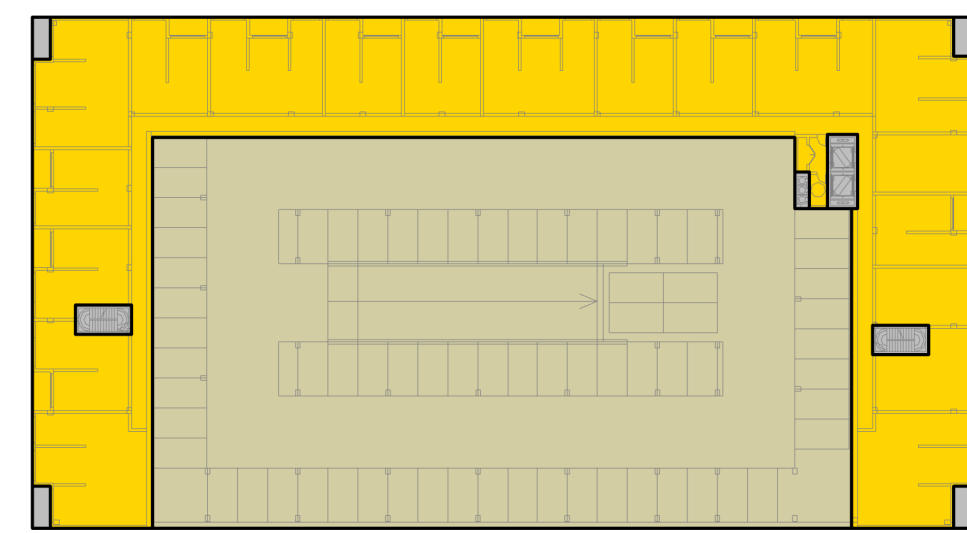
15 14 12 11 10 9 8 7 6 5 4 3 2 1



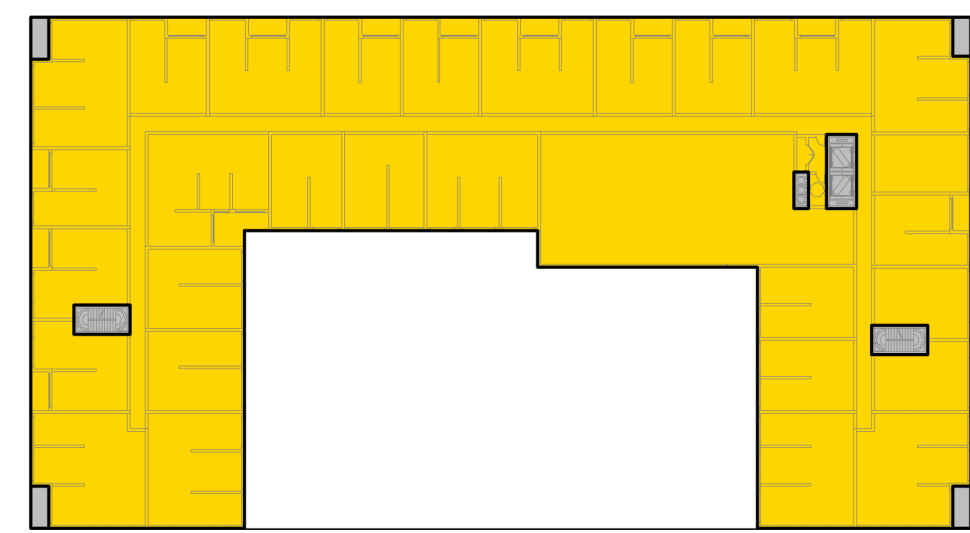
1 BLOCK 09 - LEVEL 01
SCALE: 1/84" = 1'-0"



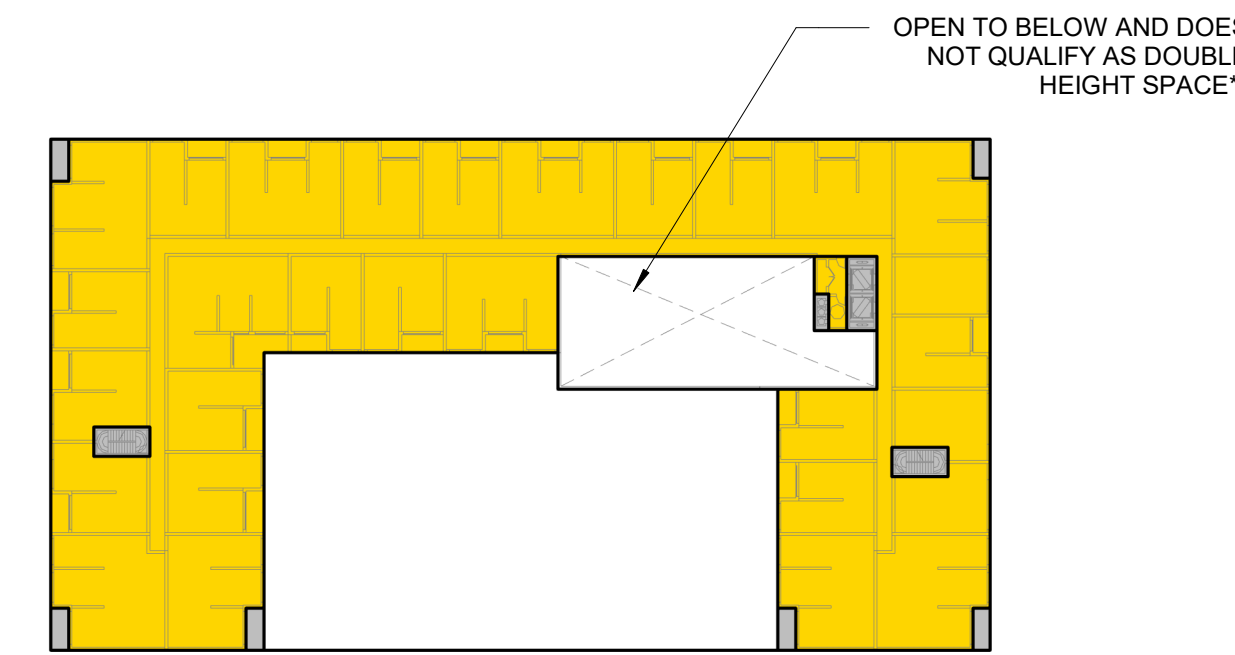
2 BLOCK 09 - LEVEL 02
SCALE: 1/84" = 1'-0"



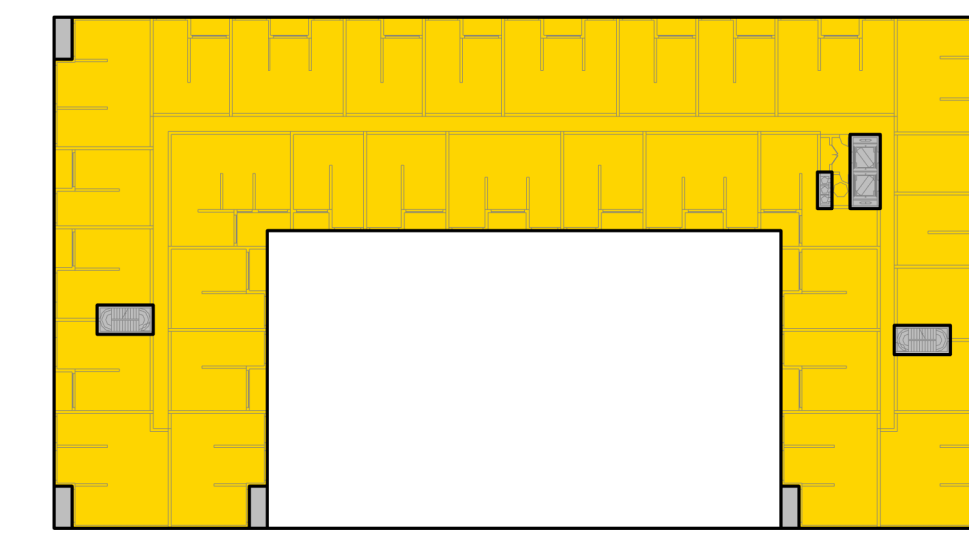
3 BLOCK 09 - LEVEL 03
SCALE: 1/84" = 1'-0"



4 BLOCK 09 - LEVEL 04
SCALE: 1/84" = 1'-0"



5 BLOCK 09 - LEVEL 05
SCALE: 1/84" = 1'-0"



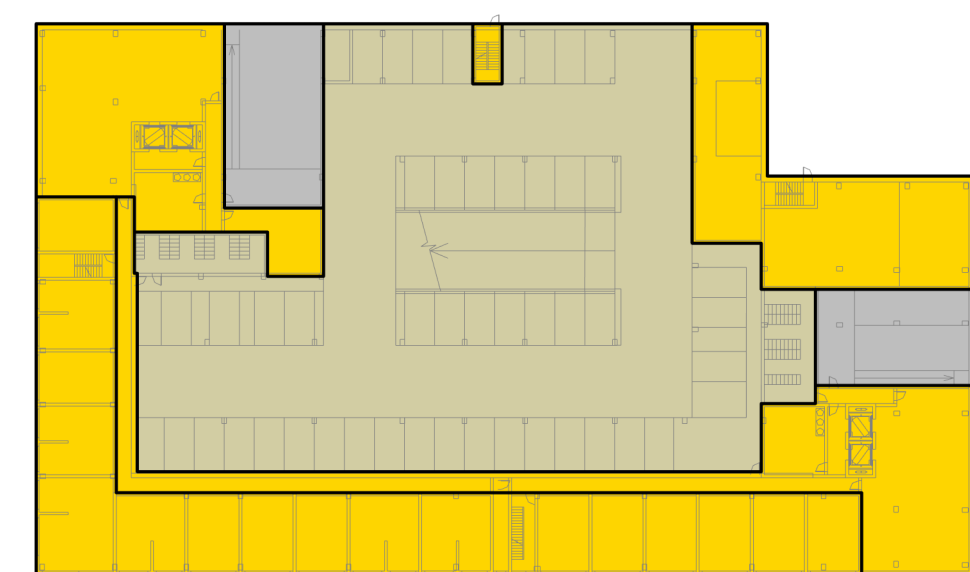
6 BLOCK 09 - LEVELS 06-08
SCALE: 1/84" = 1'-0"

BLOCK 09					
TOTAL BLOCK AREA (SF)	RESIDENTIAL			NON-RESIDENTIAL	
	TOTAL RESIDENTIAL (SF)	RESIDENTIAL* (SF)	RESIDENTIAL PARKING (SF)	RETAIL (SF)	OFFICE (SF)
LEVEL 8	35,113	35,113	35,113	0	0
LEVEL 7	35,113	35,113	35,113	0	0
LEVEL 6	35,113	35,113	35,113	0	0
LEVEL 5	31,829	31,829	31,829	0	0
LEVEL 4	36,171	36,171	36,171	0	0
LEVEL 3	52,210	52,210	22,367	29,843	0
LEVEL 2	52,209	52,209	22,366	29,843	0
LEVEL 1	51,801	51,801	24,654	27,147	0
TOTALS	329,559 SF	329,559 SF	242,726 SF	86,833 SF	0 SF

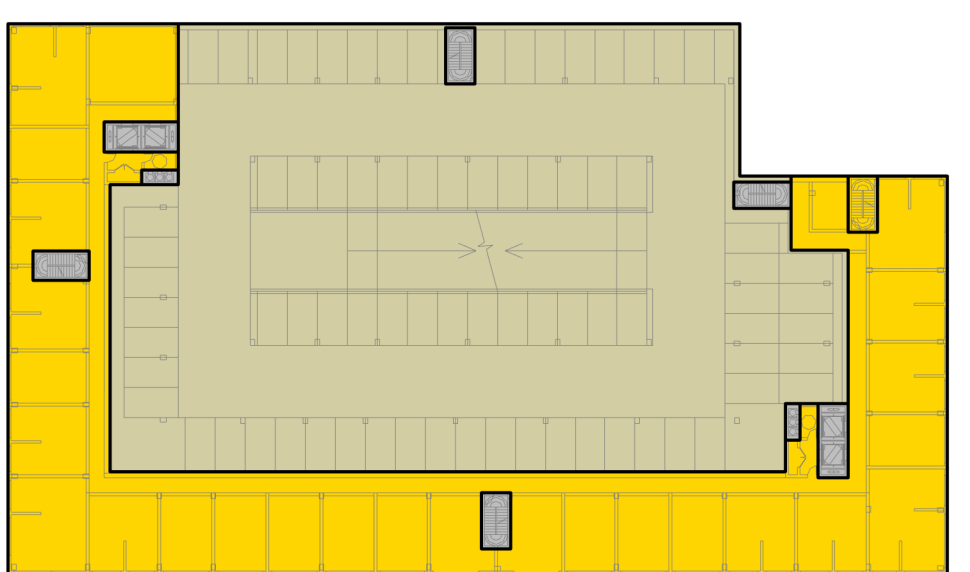
NOTE:

* BASE OF STAIRWELLS, BASE OF ELEVATOR SHAFTS, SERVICES AND MECHANICAL EQUIPMENT ROOMS ARE INCLUDED IN THE FLOOR AREA.

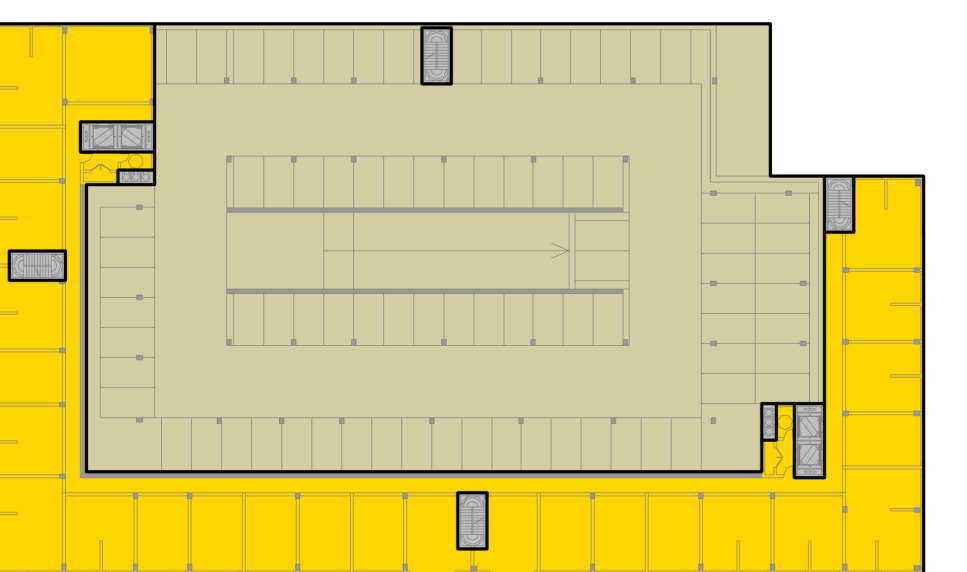
** RESIDENTIAL AREA INCLUDES UNITS, CORES, CORRIDORS, LOBBIES, AMENITIES, AND MEP(SERVICES)
*** PER CUPERTINO MUNICIPAL CODE 19.08.030 AREAS WITH A FLOOR-TO-CEILING HEIGHT THAT EXCEEDS TWENTY FEET IN HEIGHT AT THE FIRST FLOOR AND FIFTEEN FEET IN HEIGHT AT FLOORS 2 AND UP ARE INCLUDED IN THE AREA CALCULATION AS DOUBLE-HEIGHT.
**** EXCLUDED AREAS SUCH AS PARKING FACILITIES OTHER THAN RESIDENTIAL GARAGES (PARKING RAMPS TO BASEMENTS, DRIVE AISLES), LOADING



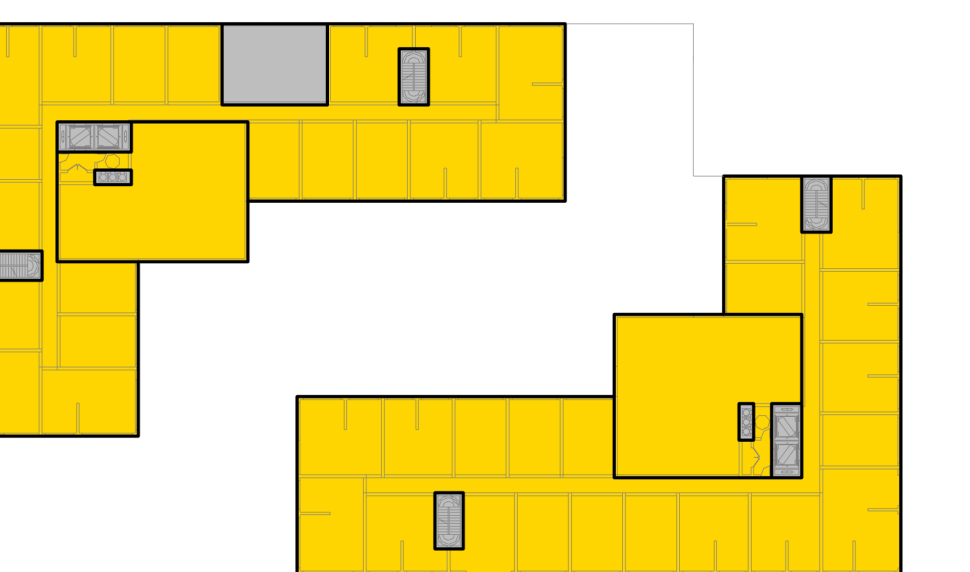
7 BLOCK 10 - LEVEL 01
SCALE: 1/84" = 1'-0"



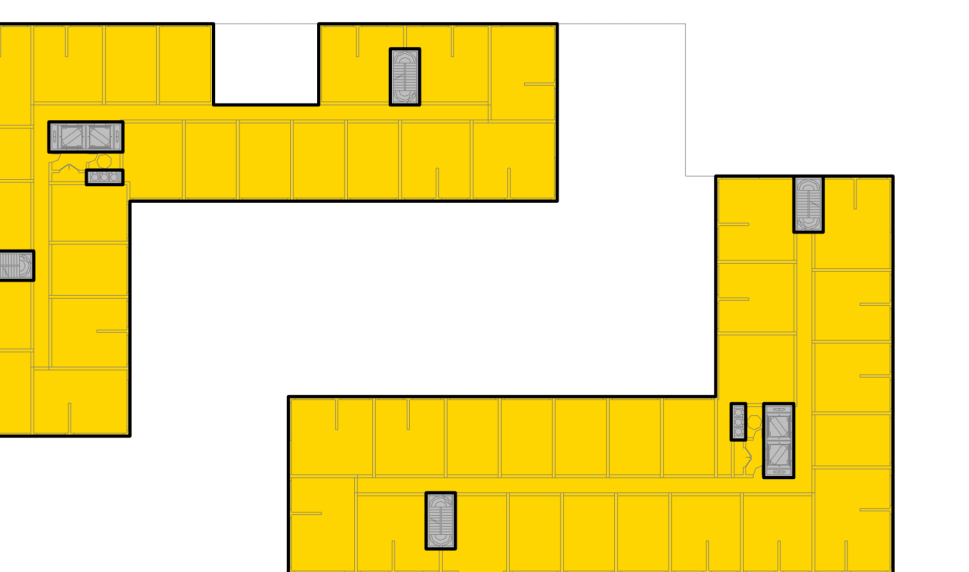
8 BLOCK 10 - LEVEL 02
SCALE: 1/84" = 1'-0"



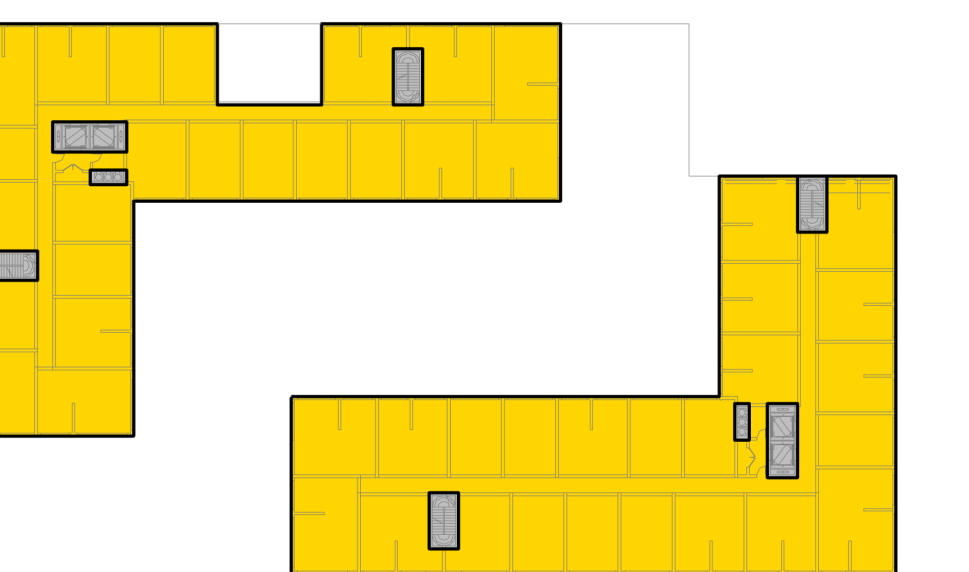
9 BLOCK 10 - LEVEL 03
SCALE: 1/84" = 1'-0"



10 BLOCK 10 - LEVEL 04
SCALE: 1/84" = 1'-0"



11 BLOCK 10 - LEVELS 05-06
SCALE: 1/84" = 1'-0"



12 BLOCK 10 - LEVELS 07-08
SCALE: 1/84" = 1'-0"

BLOCK 10					
TOTAL BLOCK AREA (SF)	RESIDENTIAL			NON-RESIDENTIAL	
	TOTAL RESIDENTIAL (SF)	RESIDENTIAL* (SF)	RESIDENTIAL PARKING (SF)	RETAIL (SF)	OFFICE (SF)
LEVEL 8	30,402	30,402	30,402	0	0
LEVEL 7	30,402	30,402	30,402	0	0
LEVEL 6	30,402	30,402	30,402	0	0
LEVEL 5	30,402	30,402	30,402	0	0
LEVEL 4	32,130	32,130	32,130	0	0
LEVEL 3	53,351	53,351	19,479	33,872	0
LEVEL 2	52,507	52,507	20,184	32,323	0
LEVEL 1	50,064	50,064	24,823	25,241	0
TOTALS	309,660 SF	309,660 SF	218,224 SF	91,436 SF	0 SF

NOTE:

* BASE OF STAIRWELLS, BASE OF ELEVATOR SHAFTS, SERVICES AND MECHANICAL EQUIPMENT ROOMS ARE INCLUDED IN THE FLOOR AREA.

** RESIDENTIAL AREA INCLUDES UNITS, CORES, CORRIDORS, LOBBIES, AMENITIES, AND MEP(SERVICES)
*** PER CUPERTINO MUNICIPAL CODE 19.08.030 AREAS WITH A FLOOR-TO-CEILING HEIGHT THAT EXCEEDS TWENTY FEET IN HEIGHT AT THE FIRST FLOOR AND FIFTEEN FEET IN HEIGHT AT FLOORS 2 AND UP ARE INCLUDED IN THE AREA CALCULATION AS DOUBLE-HEIGHT.
**** EXCLUDED AREAS SUCH AS PARKING FACILITIES OTHER THAN RESIDENTIAL GARAGES (PARKING RAMPS TO BASEMENTS, DRIVE AISLES), LOADING

LEGEND

- RESIDENTIAL*
- RESIDENTIAL PARKING
- RETAIL
- OFFICE
- EXCLUDED AREAS***

NOT FOR CONSTRUCTION

Issue Date: 10/10/23 Project No. 2462

Scale: N.T.S.

Drawing Title

AREA CALCULATIONS-PER BLOCK AND LEVEL (BLOCK 9 & 10)

P-0106.05

© 2023 KOHN PEDERSEN FOX ASSOCIATES PC. ALL RIGHTS RESERVED.