

**Client**  
VALCO PROPERTY OWNER LLC  
2005 EL CAMINO REAL, SUITE 410  
PALO ALTO, CA 94306  
TEL: 650.344.1500

**Architecture**  
KOHN PEDERSEN FOX ASSOCIATES PC  
11 WEST 42ND STREET  
NEW YORK, NY 10036  
TEL: 212.877.6500

**Architecture**  
KOHN PEDERSEN FOX ASSOCIATES PC  
2 EMBARCADERO CENTER  
SAN FRANCISCO, CA 94111  
TEL: 415.944.5491

**Landscape Architecture**  
OLIN  
1617 JOHN F. KENNEDY BOULEVARD, SUITE 1900  
PHILADELPHIA, PA 19103  
TEL: 215.440.0030

**Civil**  
SANDIS  
1700 S. WINCHESTER BOULEVARD, SUITE 200  
CAMPBELL, CA 95113  
TEL: 408.638.0900

**Lighting Design**  
ONE LUX STUDIO  
158 WEST 29TH STREET, 10TH FLOOR  
NEW YORK, NY 10001  
TEL: 212.201.5790

**Structure**  
DCI ENGINEERS  
135 MAIN STREET, SUITE 1800  
SAN FRANCISCO, CA 94105  
TEL: 415.781.1505

**MEP**  
MEYERS+ ENGINEERS  
98 BATTERY STREET, SUITE 500  
SAN FRANCISCO, CA 94111  
TEL: 415.432.8101

**Geotechnical**  
JUNGHAN  
1 ALMADEN BOULEVARD, SUITE 500  
SAN JOSE, CA 95113  
TEL: 408.263.3000

**Traffic**  
KIMLEY-HORN  
10 SOUTH ALMADEN BOULEVARD, SUITE 1250  
SAN JOSE, CA 95113  
TEL: 969.800.4130

**Parking Engineering**  
WATRY DESIGN, INC.  
2099 GATEWAY PLACE, SUITE 550  
SAN JOSE, CA 95110  
TEL: 833.917.7275

**Logistics**  
ARUP  
260 MISSION STREET, SUITE 700  
SAN FRANCISCO, CA 94105  
TEL: 415.957.9445

## SB 35 MODIFICATION APPLICATION

Revision

REV: SB-35 MODIFICATION APPLICATION 12/04/2023

Rev. Description Date

Rev. No.

Rev. Description

Rev. Description

Rev. Description

Rev. Description

Rev. Description

Rev. Description

Rev. Description

Rev. Description

Rev. Description

Rev. Description

Rev. Description

Rev. Description

Rev. Description

Rev. Description

Rev. Description

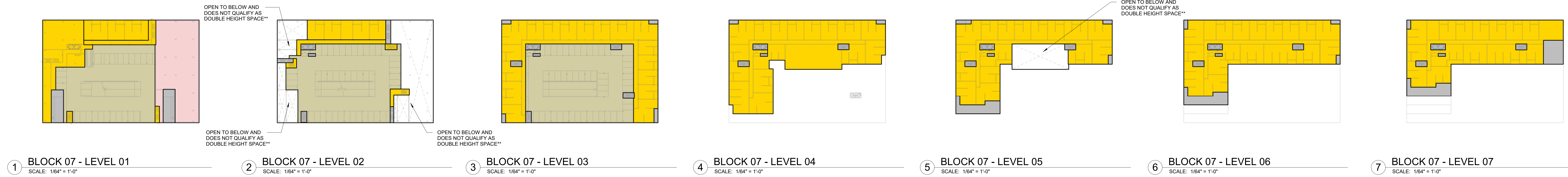
Rev. Description

Rev. Description

Rev. Description

Rev. Description

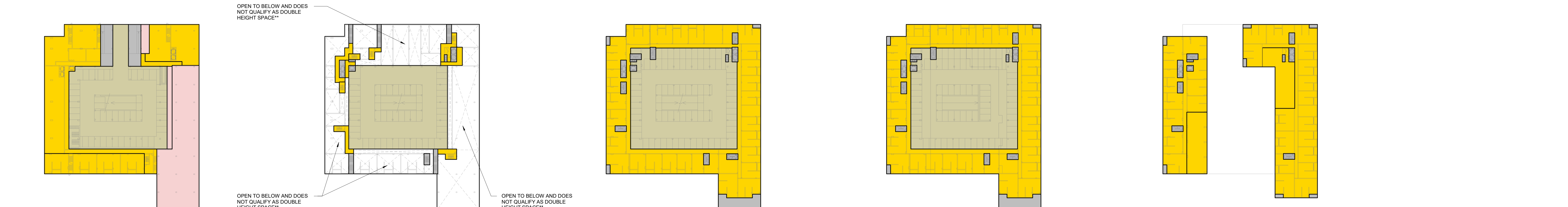
Rev. Description



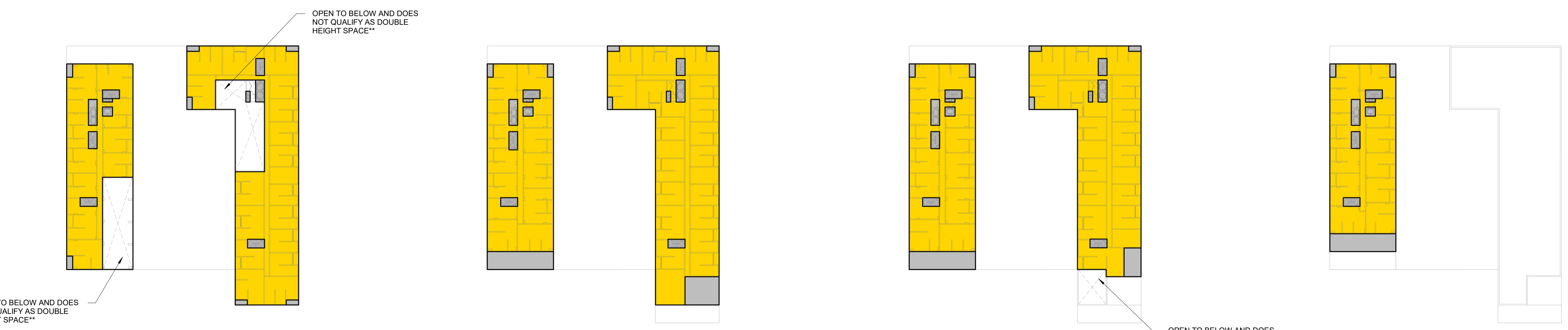
1 BLOCK 07 - LEVEL 01 SCALE: 1/8" = 1'-0"  
2 BLOCK 07 - LEVEL 02 SCALE: 1/8" = 1'-0"  
3 BLOCK 07 - LEVEL 03 SCALE: 1/8" = 1'-0"  
4 BLOCK 07 - LEVEL 04 SCALE: 1/8" = 1'-0"  
5 BLOCK 07 - LEVEL 05 SCALE: 1/8" = 1'-0"  
6 BLOCK 07 - LEVEL 06 SCALE: 1/8" = 1'-0"  
7 BLOCK 07 - LEVEL 07 SCALE: 1/8" = 1'-0"

BLOCK 07						
TOTAL BLOCK AREA (SF)	RESIDENTIAL			NON-RESIDENTIAL		
	TOTAL RESIDENTIAL (SF)	RESIDENTIAL* (SF)	RESIDENTIAL PARKING (SF)	RETAIL (SF)	OFFICE (SF)	
LEVEL 7	19,862	19,862	0	0	0	
LEVEL 6	22,094	22,094	0	0	0	
LEVEL 5	19,989	19,989	0	0	0	
LEVEL 4	25,082	25,082	0	0	0	
LEVEL 3	43,683	43,683	23,081	0	0	
LEVEL 2	28,116	28,116	6,216	21,900	0	
LEVEL 1	42,927	31,564	12,639	18,925	11,363	
TOTALS	201,753 SF	190,390 SF	126,484 SF	63,906 SF	11,363 SF	0 SF

**NOTE:**  
- BASE OF STAIRWELLS, BASE OF ELEVATOR SHAFTS, SERVICES AND MECHANICAL EQUIPMENT ROOMS ARE INCLUDED IN THE FLOOR AREA.  
\* RESIDENTIAL AREA INCLUDES UNITS, CORES, CORRIDORS, LOBBIES, AMENITIES, AND MEP/SERVICES  
\*\* PER CUPERTINO MUNICIPAL CODE 19.08.030 AREAS WITH A FLOOR-TO-CEILING HEIGHT THAT EXCEEDS TWENTY FEET IN HEIGHT AT THE FIRST FLOOR AND FIFTEEN FEET IN HEIGHT AT FLOORS 2 AND UP ARE INCLUDED IN THE AREA CALCULATION AS DOUBLE-HEIGHT.  
\*\*\* EXCLUDED AREAS SUCH AS PARKING FACILITIES OTHER THAN RESIDENTIAL GARAGES (PARKING RAMPS TO BASEMENTS, DRIVE AISLES); LOADING



8 BLOCK 08 - LEVEL 01 SCALE: 1/8" = 1'-0"  
9 BLOCK 08 - LEVEL 1M SCALE: 1/8" = 1'-0"  
10 BLOCK 08 - LEVEL 03 SCALE: 1/8" = 1'-0"  
11 BLOCK 08 - LEVEL 04 SCALE: 1/8" = 1'-0"  
12 BLOCK 08 - LEVEL 05 SCALE: 1/8" = 1'-0"



13 BLOCK 08 - LEVEL 06 SCALE: 1/8" = 1'-0"  
14 BLOCK 08 - LEVEL 07 SCALE: 1/8" = 1'-0"  
15 BLOCK 08 - LEVEL 08 SCALE: 1/8" = 1'-0"  
16 BLOCK 08 - LEVELS 09-10 SCALE: 1/8" = 1'-0"



17 BLOCK 08 - LEVELS 11-12 SCALE: 1/8" = 1'-0"  
18 BLOCK 08 - LEVELS 13-14 SCALE: 1/8" = 1'-0"  
19 BLOCK 08 - LEVELS 15-16 SCALE: 1/8" = 1'-0"  
20 BLOCK 08 - LEVELS 17-18 SCALE: 1/8" = 1'-0"

BLOCK 08						
TOTAL BLOCK AREA (SF)	RESIDENTIAL			NON-RESIDENTIAL		
	TOTAL RESIDENTIAL (SF)	RESIDENTIAL* (SF)	RESIDENTIAL PARKING (SF)	RETAIL (SF)	OFFICE (SF)	
LEVEL 18	7,129	7,129	0	0	0	
LEVEL 17	7,129	7,129	0	0	0	
LEVEL 16	8,609	8,609	0	0	0	
LEVEL 15	8,609	8,609	0	0	0	
LEVEL 14	10,090	10,090	0	0	0	
LEVEL 13	10,090	10,090	0	0	0	
LEVEL 12	11,569	11,569	0	0	0	
LEVEL 11	11,569	11,569	0	0	0	
LEVEL 10	12,872	12,872	0	0	0	
LEVEL 9	12,872	12,872	0	0	0	
LEVEL 8	34,706	34,706	0	0	0	
LEVEL 7	36,613	36,613	0	0	0	
LEVEL 6	31,840	31,840	0	0	0	
LEVEL 5	39,170	39,170	0	0	0	
LEVEL 4	64,410	64,410	35,004	29,406	0	
LEVEL 3	64,410	64,410	35,004	29,406	0	
LEVEL 2	26,715	26,715	3,668	23,047	0	
LEVEL 1	65,438	50,072	25,564	24,508	15,366	
TOTALS	463,840 SF	448,474 SF	342,107 SF	106,367 SF	15,366 SF	0 SF

**NOTE:**  
- BASE OF STAIRWELLS, BASE OF ELEVATOR SHAFTS, SERVICES AND MECHANICAL EQUIPMENT ROOMS ARE INCLUDED IN THE FLOOR AREA.  
\* RESIDENTIAL AREA INCLUDES UNITS, CORES, CORRIDORS, LOBBIES, AMENITIES, AND MEP/SERVICES  
\*\* PER CUPERTINO MUNICIPAL CODE 19.08.030 AREAS WITH A FLOOR-TO-CEILING HEIGHT THAT EXCEEDS TWENTY FEET IN HEIGHT AT THE FIRST FLOOR AND FIFTEEN FEET IN HEIGHT AT FLOORS 2 AND UP ARE INCLUDED IN THE AREA CALCULATION AS DOUBLE-HEIGHT.  
\*\*\* EXCLUDED AREAS SUCH AS PARKING FACILITIES OTHER THAN RESIDENTIAL GARAGES (PARKING RAMPS TO BASEMENTS, DRIVE AISLES); LOADING

**LEGEND**

- RESIDENTIAL\*
- RESIDENTIAL PARKING
- RETAIL
- OFFICE
- EXCLUDED AREAS \*\*\*

NOT FOR CONSTRUCTION

AREA CALCULATIONS - PER BLOCK AND LEVEL (BLOCK 7 & 8)

P-0106.04